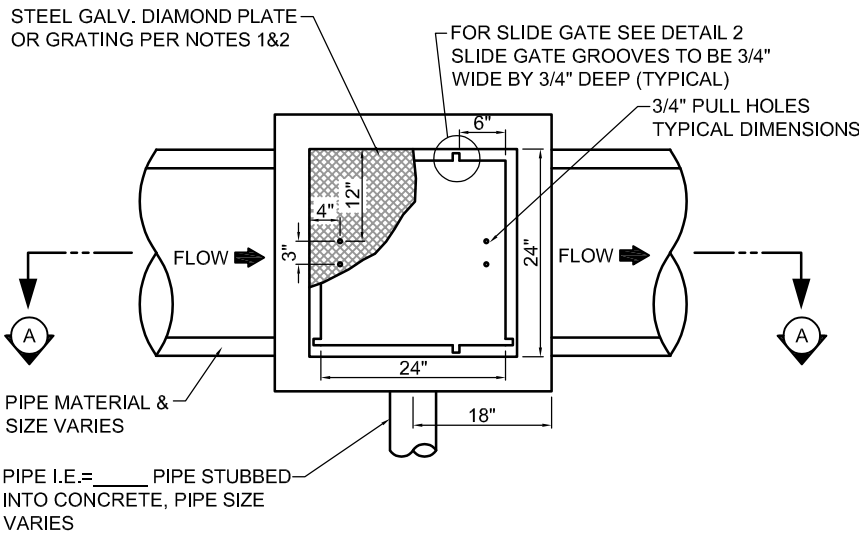


**SECTION A-A**

N.T.S.

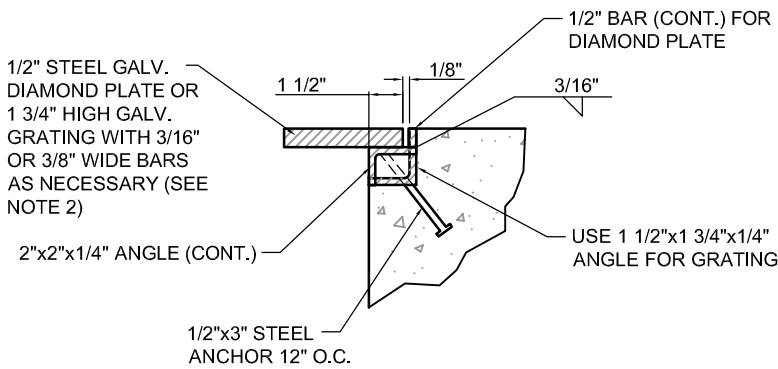
**NOTES:**

1. ALL EXPOSED METAL PARTS SHALL BE A-36 GALVANIZED STEEL AND ALL GALVANIZING DAMAGED BY FABRICATION OR INSTALLATION SHALL RECEIVE TWO COATS OF ALUMINUM PAINT (GALVONOX OR EQUAL).
2. GRATING WITH 1 3/4" x 3/16" BARS AND DIAMOND PLATE SHALL ONLY BE USED IN SIDEWALKS.



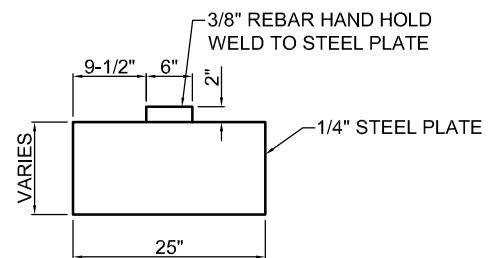
**PLAN VIEW**

N.T.S.



**DETAIL 1**

N.T.S.



**DETAIL 2**

N.T.S.

REVISIONS		
DATE	DESCRIPTION	BY