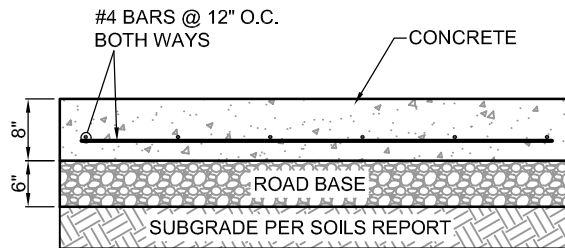


PLAN VIEW

N.T.S.

NOTES:

1. FALSE RADIUS ONLY ALLOWED WHERE APPROVED BY CITY ENGINEER.
2. CURB & GUTTER TO FLOW AWAY FROM FALSE RADIUS UNLESS STORM WATER FLOW IS ROUTED INTO A STORM DRAIN VIA A CURB INLET BOX AS SHOWN.
3. FALSE RADIUS TO BE ADAPTED TO CONDITION IN FIELD AS APPROVED BY CITY ENGINEER.



SECTION A-A

N.T.S.

| |
|------------------------|
| SHEET NO. C7 |
| FILE: C07 |

| |
|----------------------------|
| FALSE RADIUS DETAIL |
|----------------------------|

| REVISIONS | | |
|-----------|-------------|----|
| DATE | DESCRIPTION | BY |
| | | |
| | | |
| | | |

| |
|---|
| CEDAR CITY 10 NORTH MAIN STREET CEDAR CITY, UTAH 84720 PH. (435) 586-2983 |
|---|

| | |
|------------------|--------------------|
| SCALE: N.T.S. | DATE: 7/2021 |
| DRAWN: T.B.M. | CHECKED: J.A.S. |