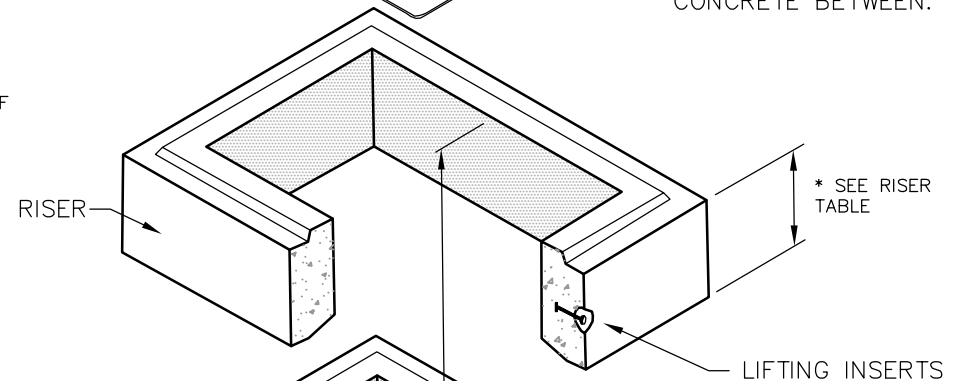
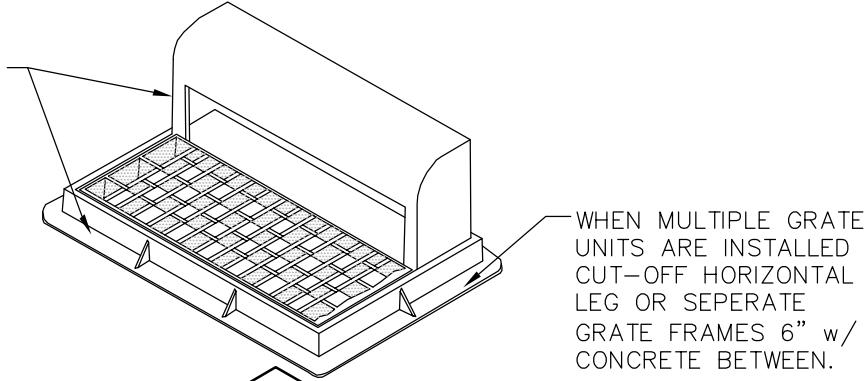


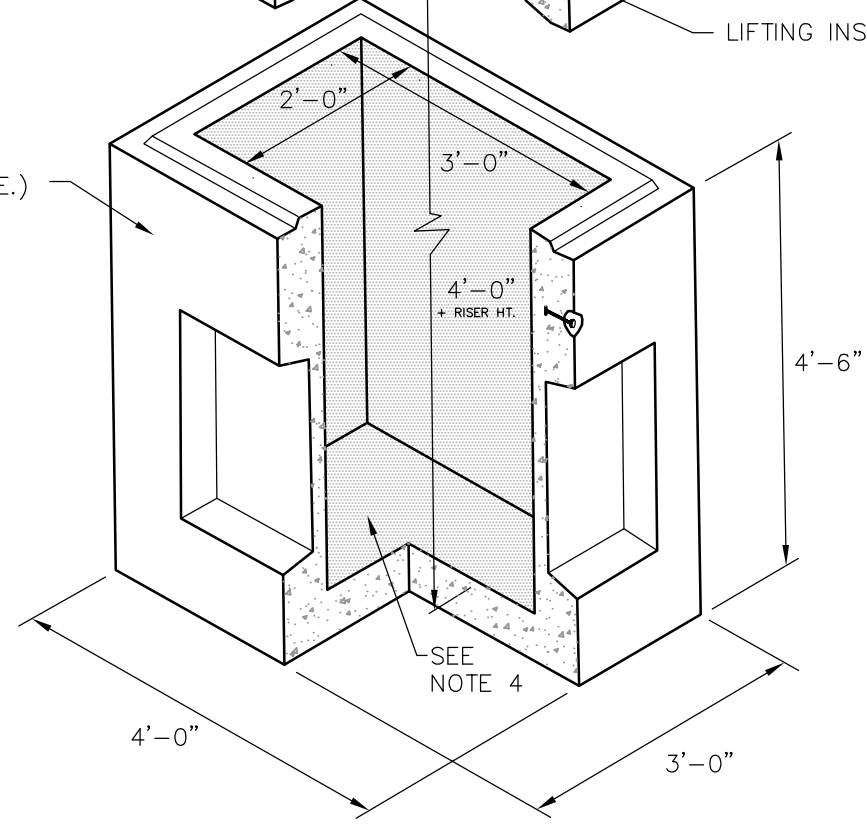
FRAME & GRATE
(D&L SUPPLY 1-3517 O.A.E.)

NOTES:

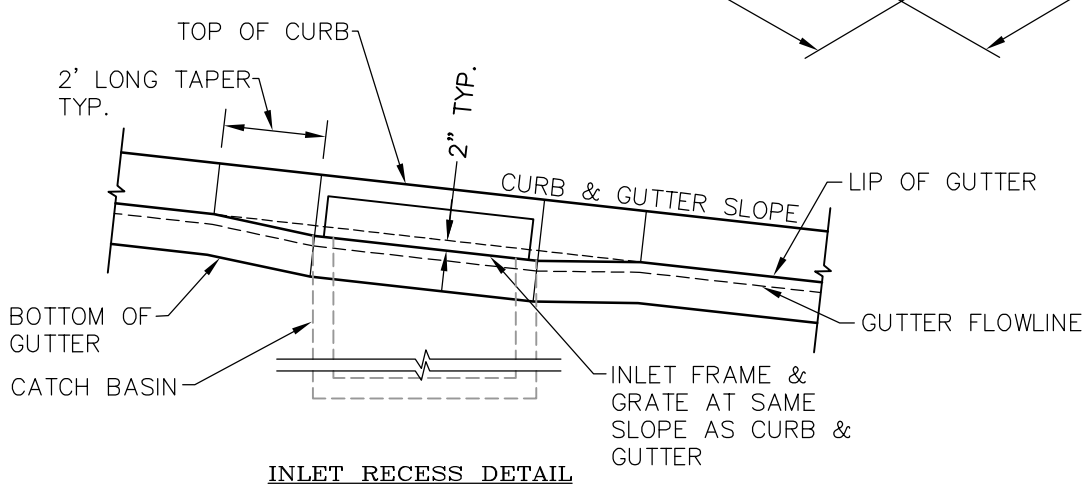
1. WHEN REQUIRED MULTIPLE UNIT ASSEMBLIES SHALL BE INSTALLED WITH A SINGLE CATCH BASIN ENLARGED ACCORDINGLY.
2. CAST IN PLACE BOXES MAY BE USED WHEN APPROVED BY THE CITY ENGINEER.
3. TOP OF INLET BOX GRATE TO BE RECESSED 2" LOWER THAN FLOWLINE OF GUTTER AS SHOWN IN DETAIL BELOW.
4. CONCRETE TROUGH FLOWLINE REQUIRED PER DETAIL D5 ON IN-LINE/FLOW THRU BOXES.
5. BOX & GRATE GRADE TO MATCH GRADE OF CURB AND GUTTER GRADE.
6. GRATE FRAME TO BE SET DIRECTLY ON TOP OF BOX OR TOP OF PRECAST CONCRETE GRADE RING AT THE ELEVATION 2" LOWER THAN FLOWLINE OF THE CURB AND GUTTER PER THE INLET RECESS DETAIL BELOW.
7. CURB INLET BOX CAN BE USED AS A MANHOLE FOR 12"-18" PIPE IF PLACED IN CURB PER THIS DETAIL. USE DETAIL D5 FOR LARGER PIPE SIZES.



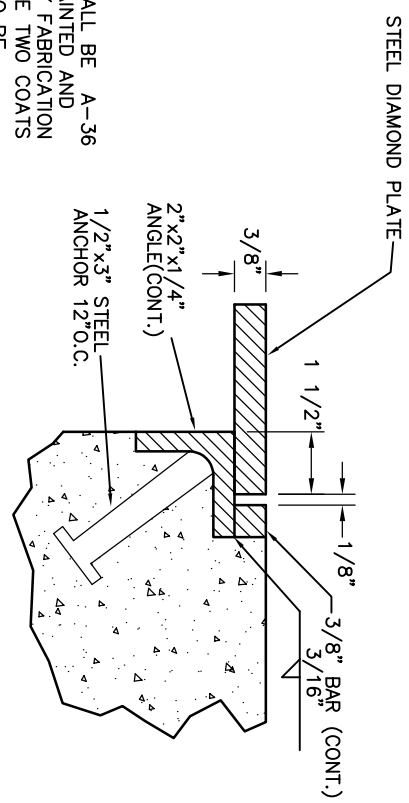
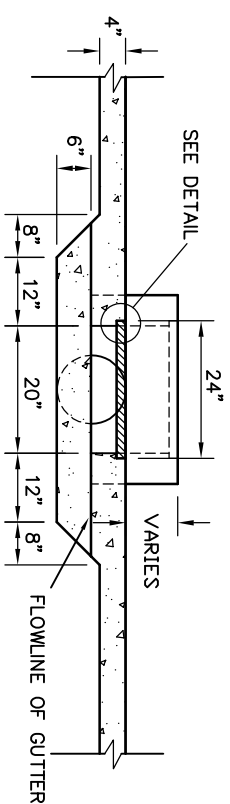
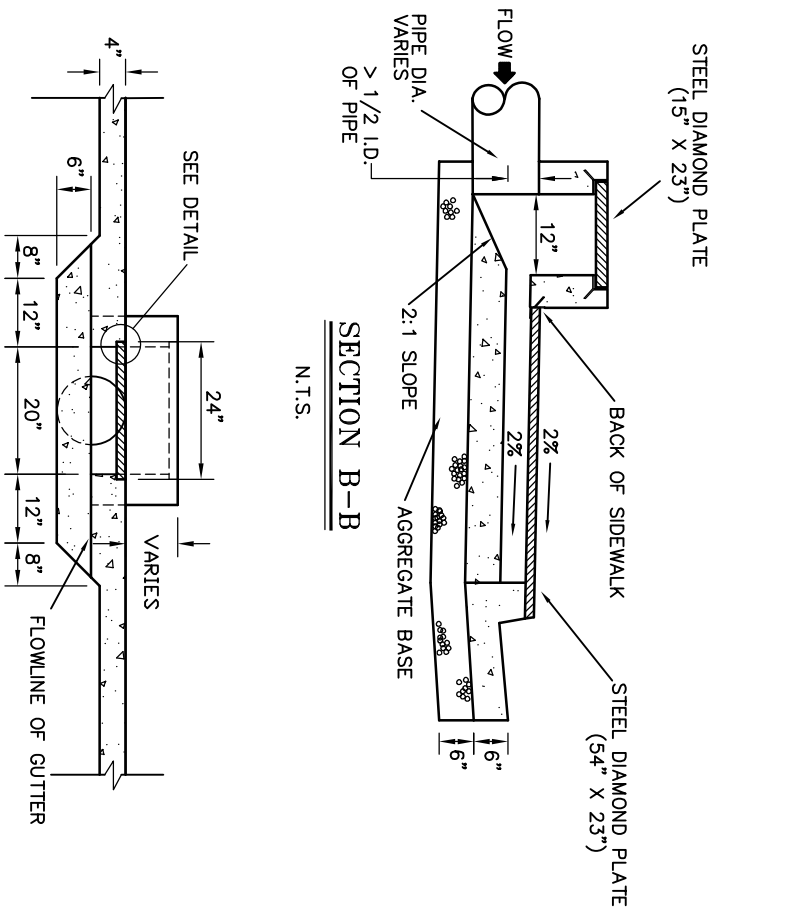
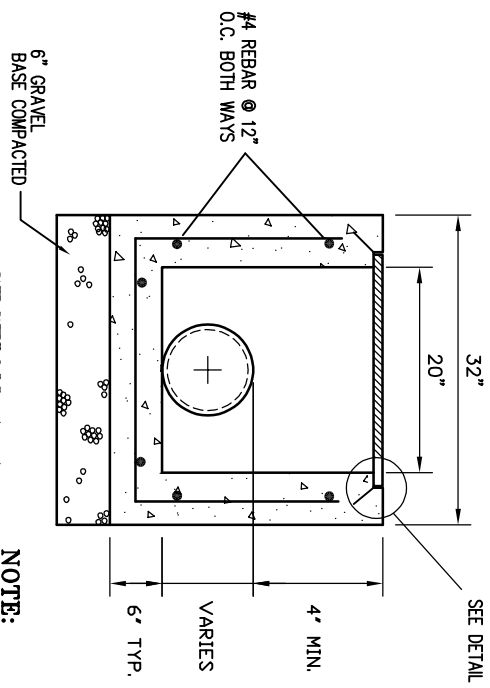
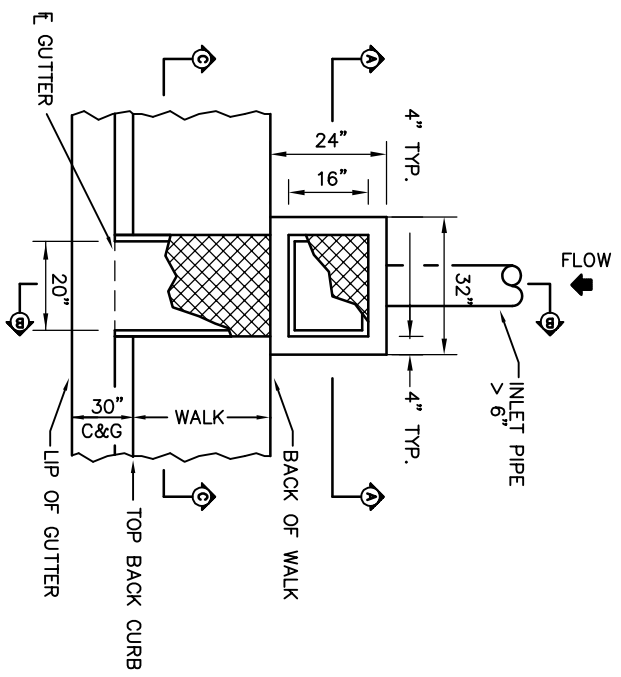
CATCH BASIN
(AMCOR CB125 O.A.E.)



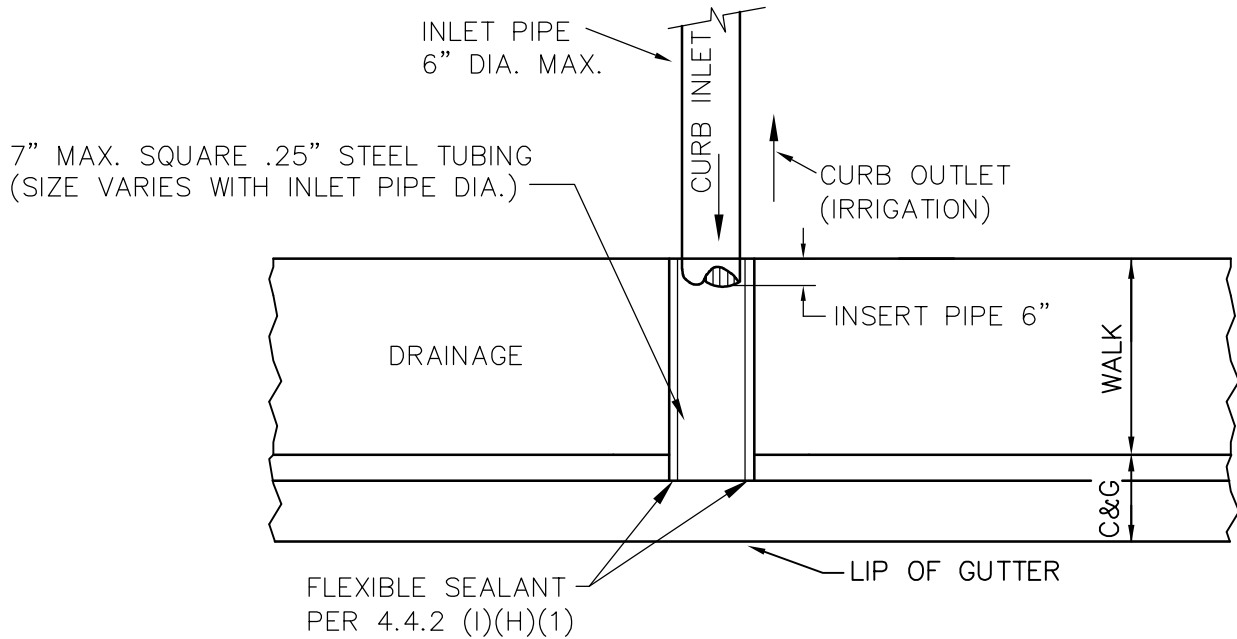
RISER		
HEIGHT	CODE	WEIGHT
1'	CB231R	930#
2'	CB232R	1860#
3'	CB233R	2790#



INLET RECESS DETAIL

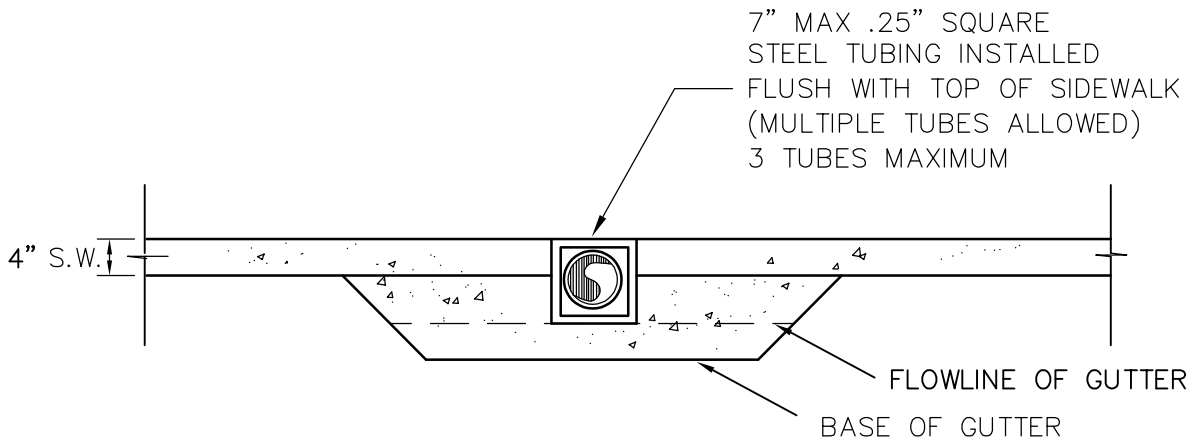


NOTE:
ALL EXPOSED METAL PARTS SHALL BE A-36 HOT DIPPED GALVANIZED OR PAINTED AND ALL GALVANIZING DAMAGED BY FABRICATION OR INSTALLATION SHALL RECEIVE TWO COATS OF GALVANIZED PAINT (PAINT TO BE RUSTOLEUM GALVANIZING COMPOUND SPRAY OR EQUAL).



PLAN

N.T.S.



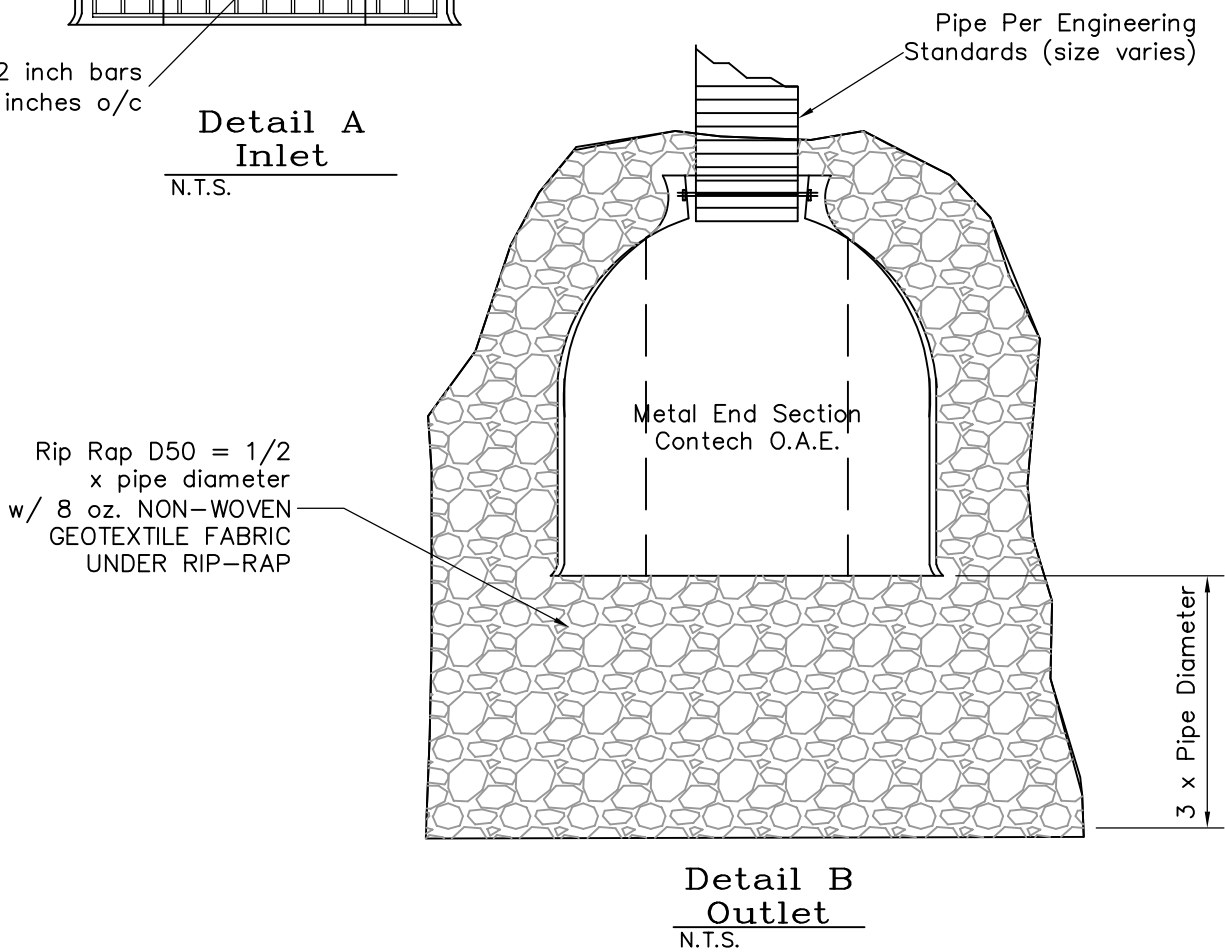
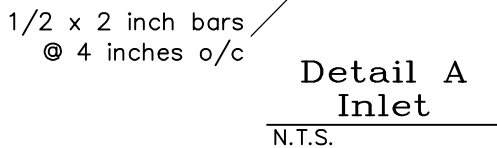
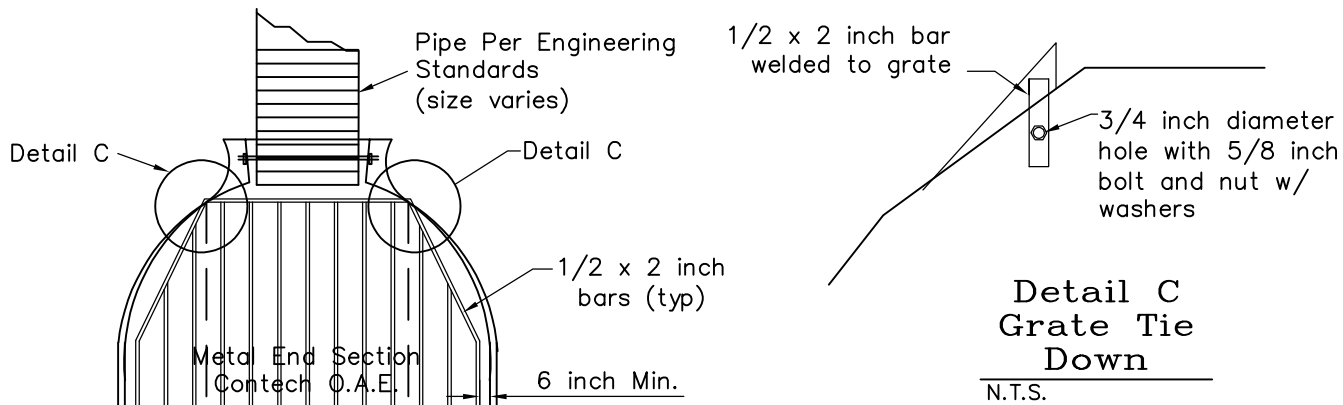
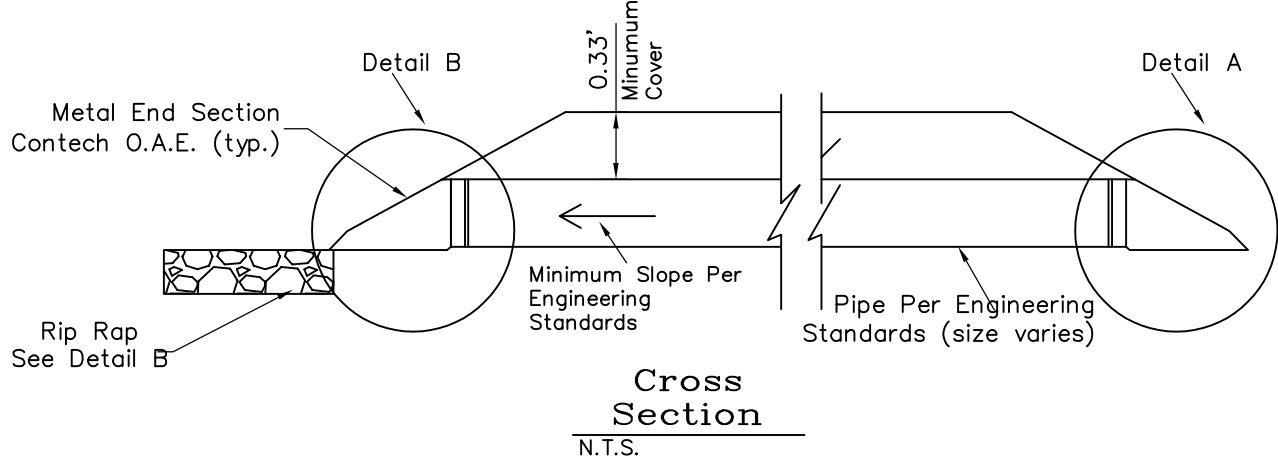
SECTION

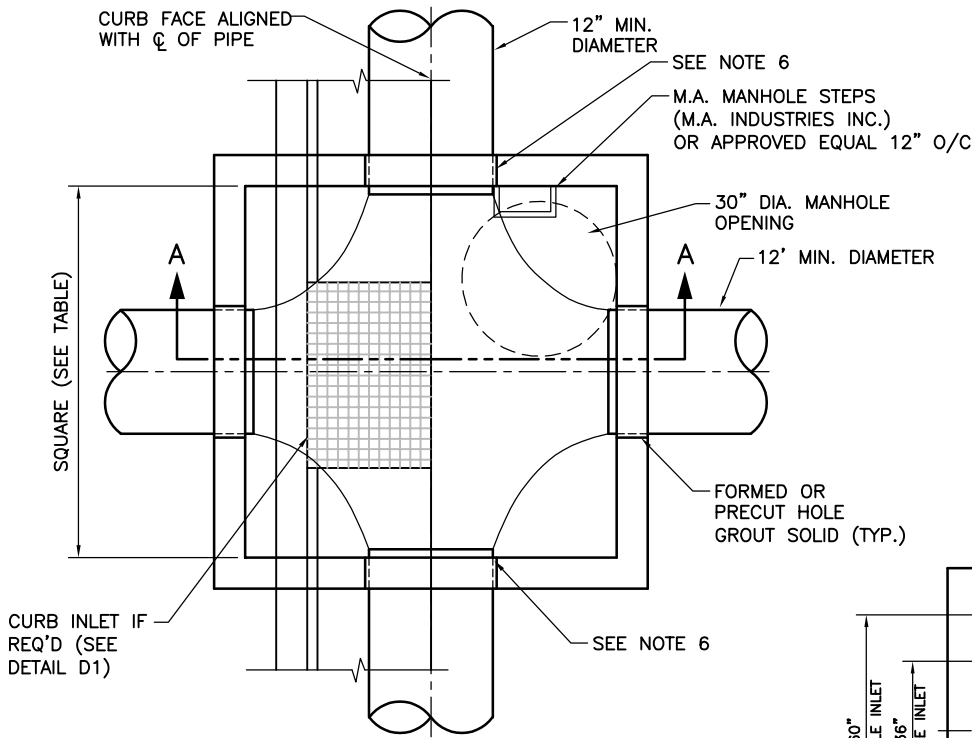
N.T.S.

NOTE:

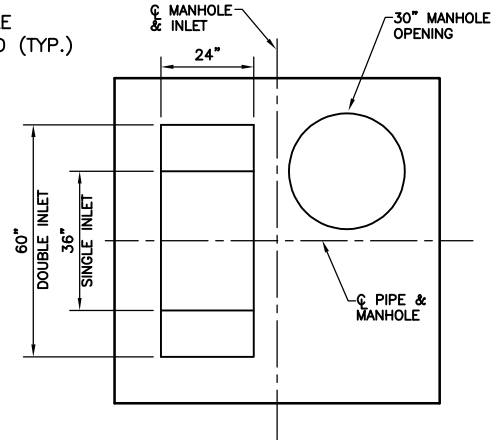
ALL EXPOSED METAL PARTS SHALL BE A-36 HOT DIPPED GALVANIZED OR PAINTED AND ALL GALVANIZING DAMAGED BY FABRICATION OR INSTALLATION SHALL RECEIVE TWO COATS OF GALVANIZED PAINT (PAINT TO BE RUSTOLEUM GALVANIZING COMPOUND SPRAY OR EQUAL)

REVISIONS		
DATE	DESCRIPTION	BY





PLAN
N.T.S.



CURB INLET CUT-OUT DETAIL
N.T.S.

PIPE DIAMETER	MANHOLE I.D. (SQ. INSIDE DIM.)
12"-18"	48"
20"-36"	60"
42"-48"	72"
> 48"	84"

SEE NOTE 1

4"Ø CONCRETE COLLAR w/ (4) #4 BARS w/ REINFORCING FIBERS, CONCRETE COLLAR THICKNESS 8" MINIMUM BUT THICK ENOUGH TO ENCASE GRADE RINGS. (SEE NOTE 2)

#5 REBAR @ 4" O/C EACH WAY (SEE NOTE 3)

12" min.

D&L MANHOLE RING AND GRATE NO. C-2670 (O.A.E.)

CONCRETE GRADE RINGS OR 30" I.D. CORRUGATED POLYETHYLENE PIPE ENCASED IN CONCRETE COLLAR (12" MAX. HEIGHT)

SEAL ALL JOINTS w/ "RAM-NEK" (O.A.E.) ASPHALTIC SEALER

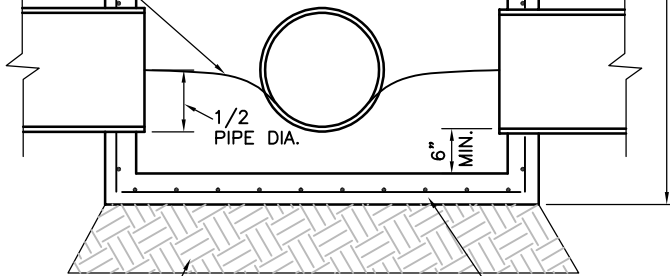
2'-4" MAX.

#5 REBAR @ 8" O/C EACH WAY (SEE NOTE 3)

CONCRETE TROUGH SLOPED TO PIPE

6" min.

VARIES



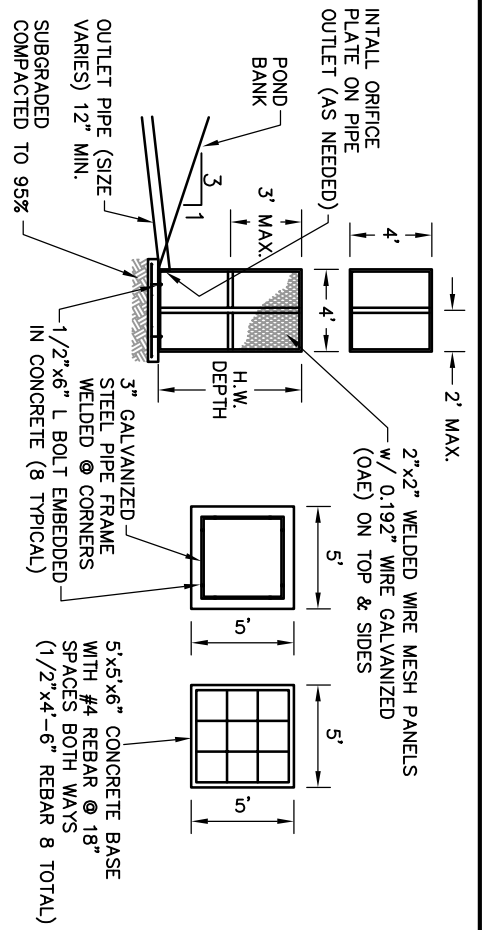
SECTION A-A
N.T.S.

#5 REBAR @ 8" O/C EACH WAY (SEE NOTE 3)

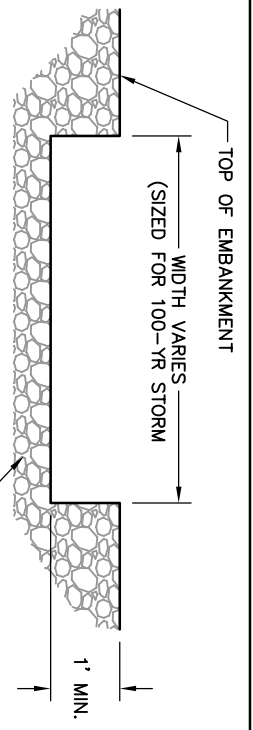
UNDISTURBED EARTH OR 12" OF 1" MAX. ROCK

NOTE:

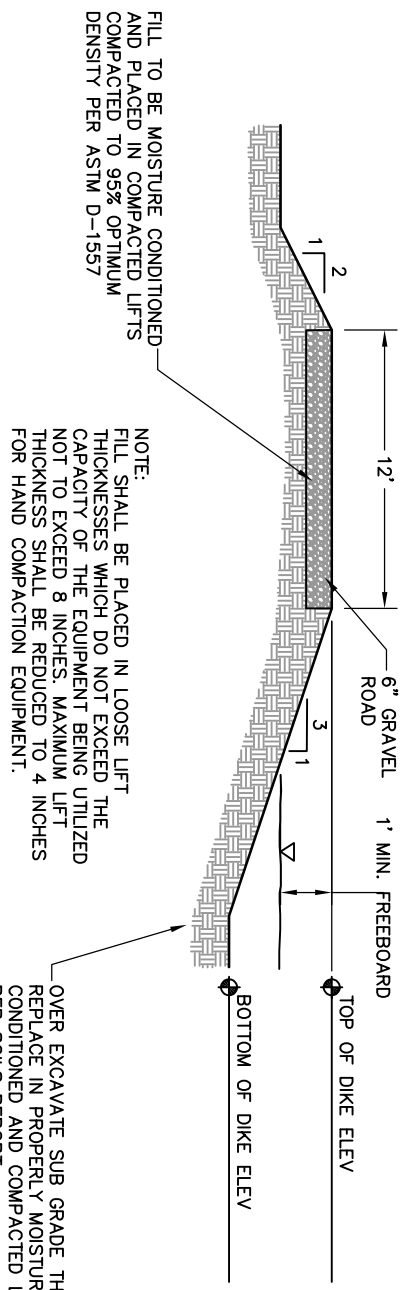
- CAN USE INLET BOX AS A MANHOLE FOR 12"-18" PIPE IF PLACED IN CURB PER DETAIL D1.
- MANHOLES IN ROADWAYS REQUIRE CONC. COLLAR. MANHOLES IN UNIMPROVED AREAS SHALL BE SET 6 TO 12 INCHES ABOVE FINISH GRADE. (NO CONC. COLLAR REQ'D)
- PRE-CAST MANHOLE TO HAVE H-20 LOAD RATING CERTIFICATION.
- INSTALL NON-SHRINK GROUT BETWEEN ALL CONCRETE GRADE RINGS AND MANHOLE COVER RING.
- MANHOLE LID, RING AND CONCRETE COLLAR TO BE CENTERED ON MANHOLE OPENING AND SET 1/4 INCH BELOW TOP OF ASPHALT.
- MANHOLE INLET PIPE INVERT TO BE 0.20 FT HIGHER THAN OUT PIPE INVERT.



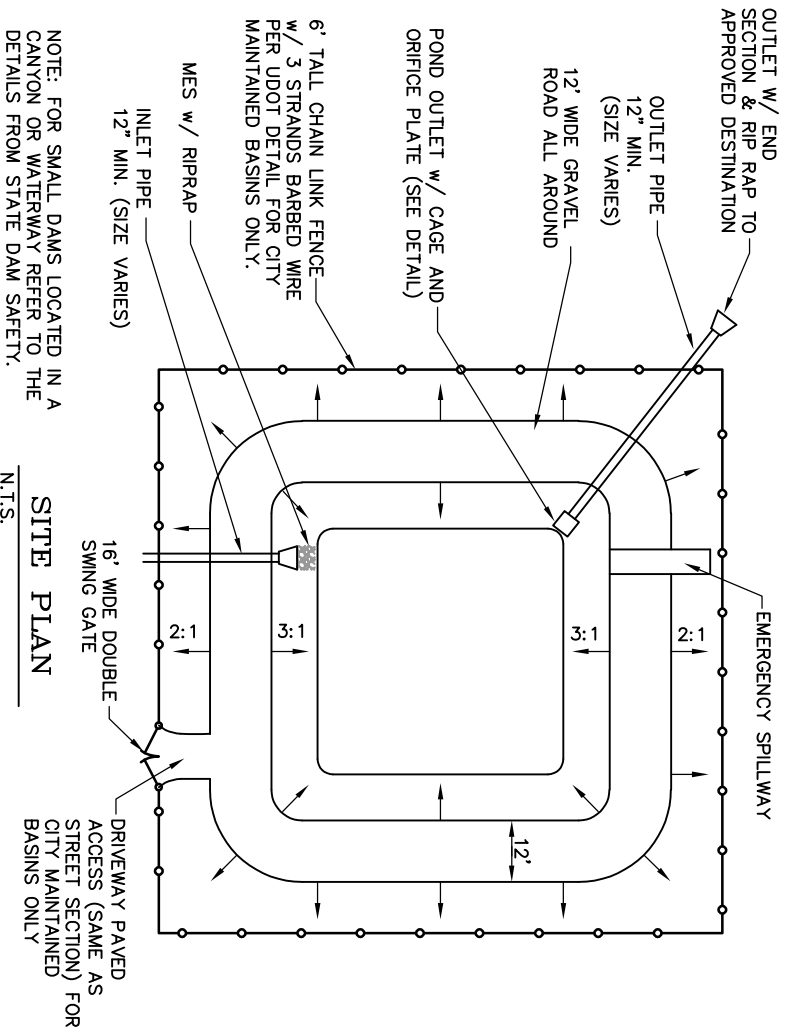
SCREEN POND OUTLET DETAIL
N.T.S.



EMERGENCY SPILLWAY
N.T.S.

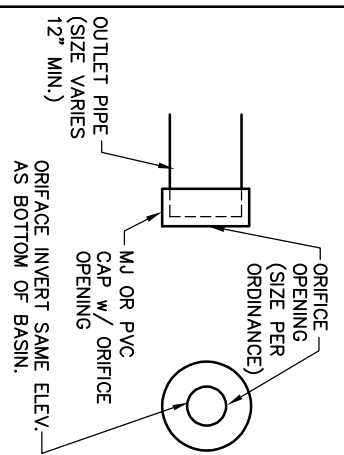


EMBANKMENT SECTION
N.T.S.

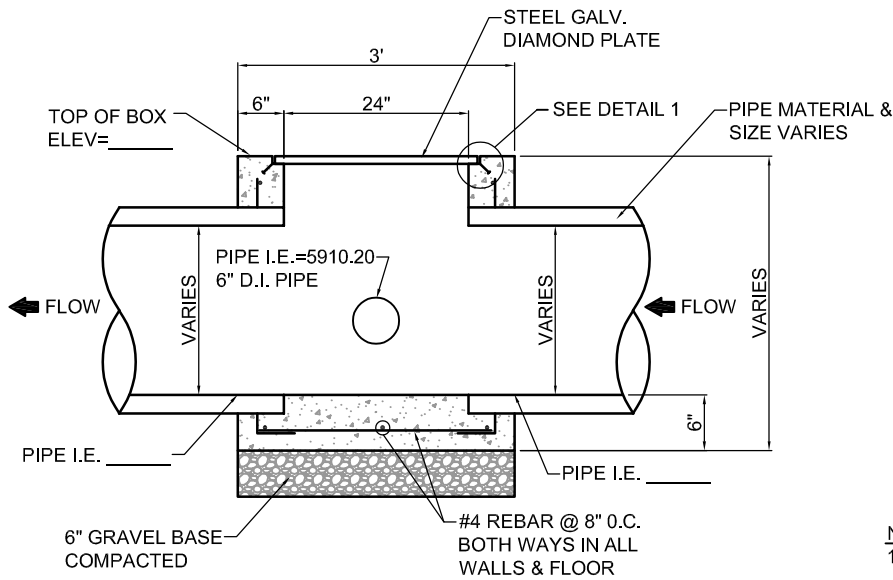


SITE PLAN
N.T.S.

MINIMUM AMOUNT OF ACREAGE SERVED BY A DETENTION POND = 160 ACRES



ORIFICE DETAIL
N.T.S.

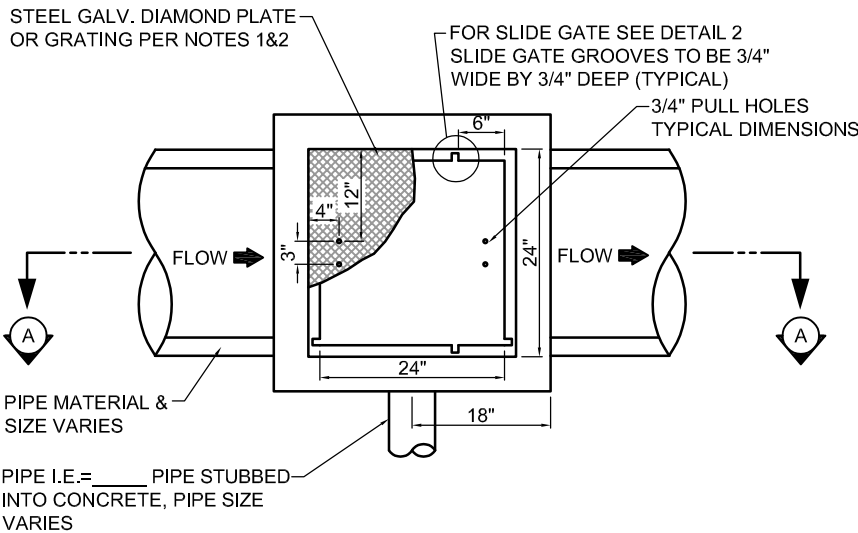


SECTION A-A

N.T.S.

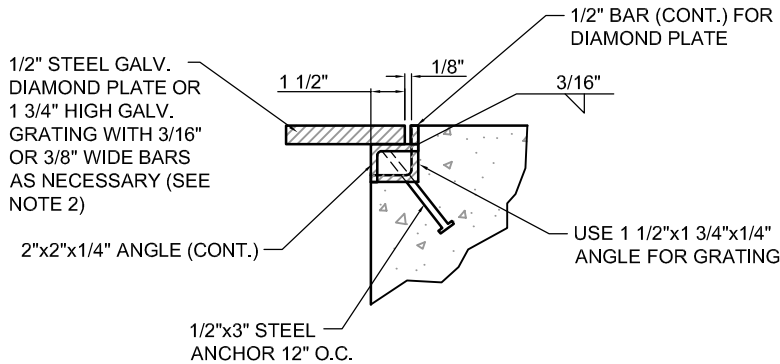
NOTES:

1. ALL EXPOSED METAL PARTS SHALL BE A-36 GALVANIZED STEEL AND ALL GALVANIZING DAMAGED BY FABRICATION OR INSTALLATION SHALL RECEIVE TWO COATS OF ALUMINUM PAINT (GALVONOX OR EQUAL).
2. GRATING WITH 1 3/4" x 3/16" BARS AND DIAMOND PLATE SHALL ONLY BE USED IN SIDEWALKS.



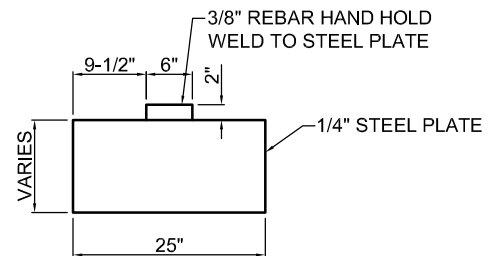
PLAN VIEW

N.T.S.



DETAIL 1

N.T.S.



DETAIL 2

N.T.S.

REVISIONS		
DATE	DESCRIPTION	BY