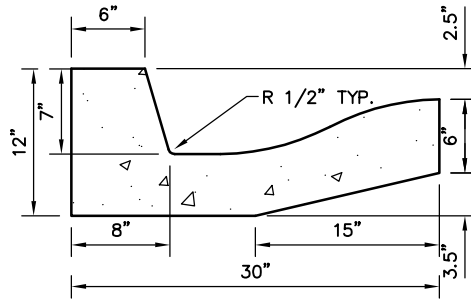


30" CURB & GUTTER

0.57 YD.³/10 LINEAR FT.

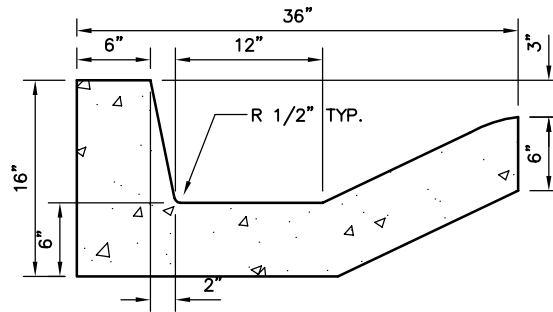
TYPE A



30" IRRIGATION C&G

0.57 YD.³/10 LINEAR FT.

TYPE B



36" CURB & GUTTER

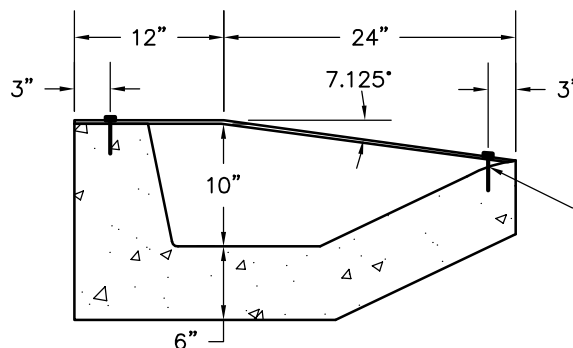
0.81 YD.³/10 LINEAR FT.

TYPE C

NOTE:

ALL CURB AND GUTTER TYPES SHALL HAVE:

1. CONTRACTION JOINTS EVERY 10' O.C. 1/2" DEEP.
2. EXPANSION JOINTS AT THE P.C. AND P.T. OF A STREET INTERSECTION CURB RADIUS RETURN.



1/2" x 4" ANCHOR BOLT (GALVANIZED) w/ 5/8" HOLE (SPACED 2' O/C & ON ALL CORNERS)

COVERED DRIVE OR SIDEWALK ACCESS RAMP*

USING 1/2" LARGE PATTERN INLAND 4-WAY PLATE (GALVANIZED PAINTED OR HOT DIPPED) LENGTHS TO BE SAME AS DRIVEWAY OR SIDEWALK WIDTHS

* USE ONLY WHEN APPROVED BY THE CITY ENGINEER.

SHEET NO.

C1

FILE: C01

CURB & GUTTER

CEDAR CITY
10 NORTH MAIN STREET
CEDAR CITY, UTAH 84720
PH. (435) 586-2963

SCALE:

N.T.S.

DATE:

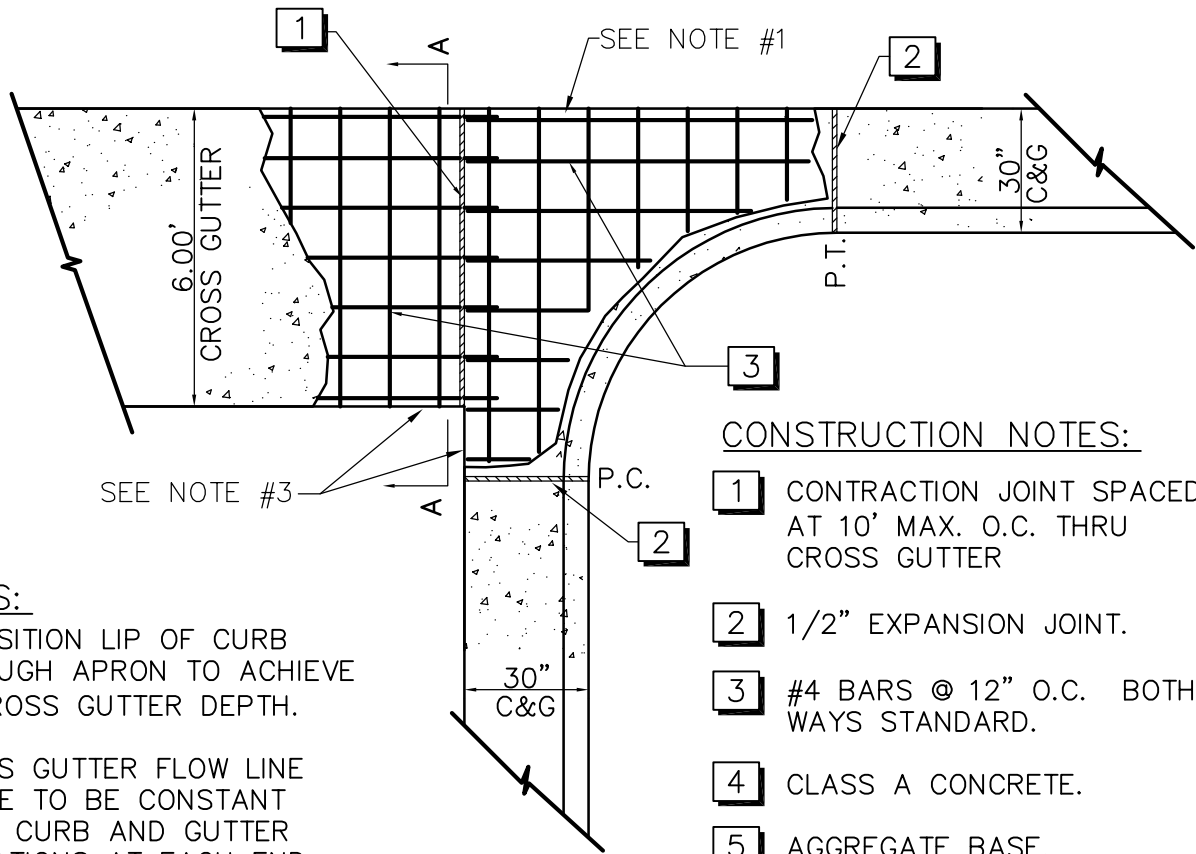
8/2019

DRAWN:

T.B.M.

CHECKED:

K.C.W.



SEE NOTE #3

SEE NOTE #1

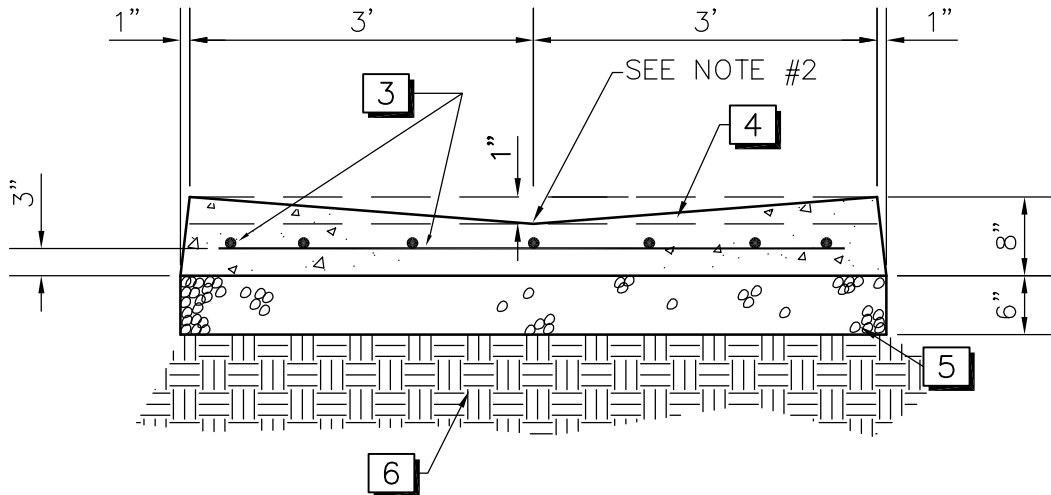
CONSTRUCTION NOTES:

- 1 CONTRACTION JOINT SPACED AT 10' MAX. O.C. THRU CROSS GUTTER
- 2 1/2" EXPANSION JOINT.
- 3 #4 BARS @ 12" O.C. BOTH WAYS STANDARD.
- 4 CLASS A CONCRETE.
- 5 AGGREGATE BASE.
- 6 COMPACTED SUBGRADE.
- 7 REBAR MATTS TO BE SUPPORTED ON STEEL REBAR CHAIRS SPACED 4 FEET O/C EACH WAY & AT SUFFICIENT HEIGHT TO PUT REBAR IN CENTER OF CONCRETE SECTION.

NOTES:

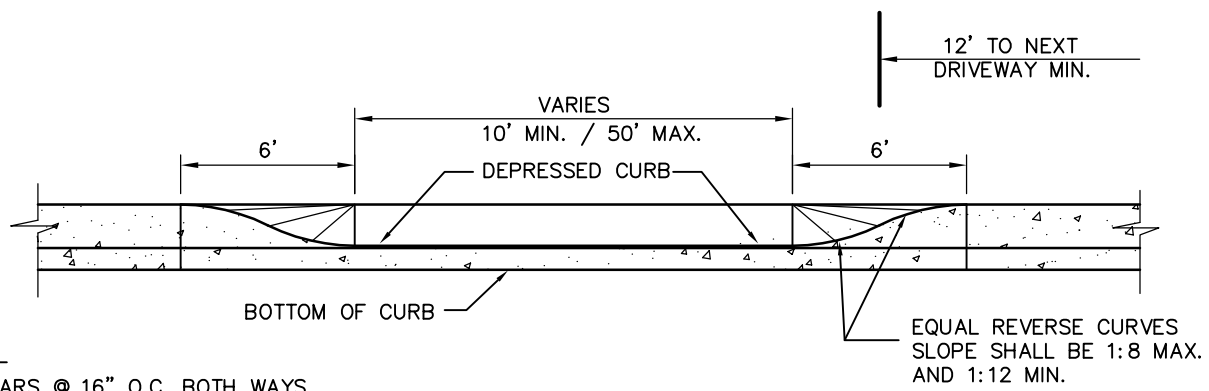
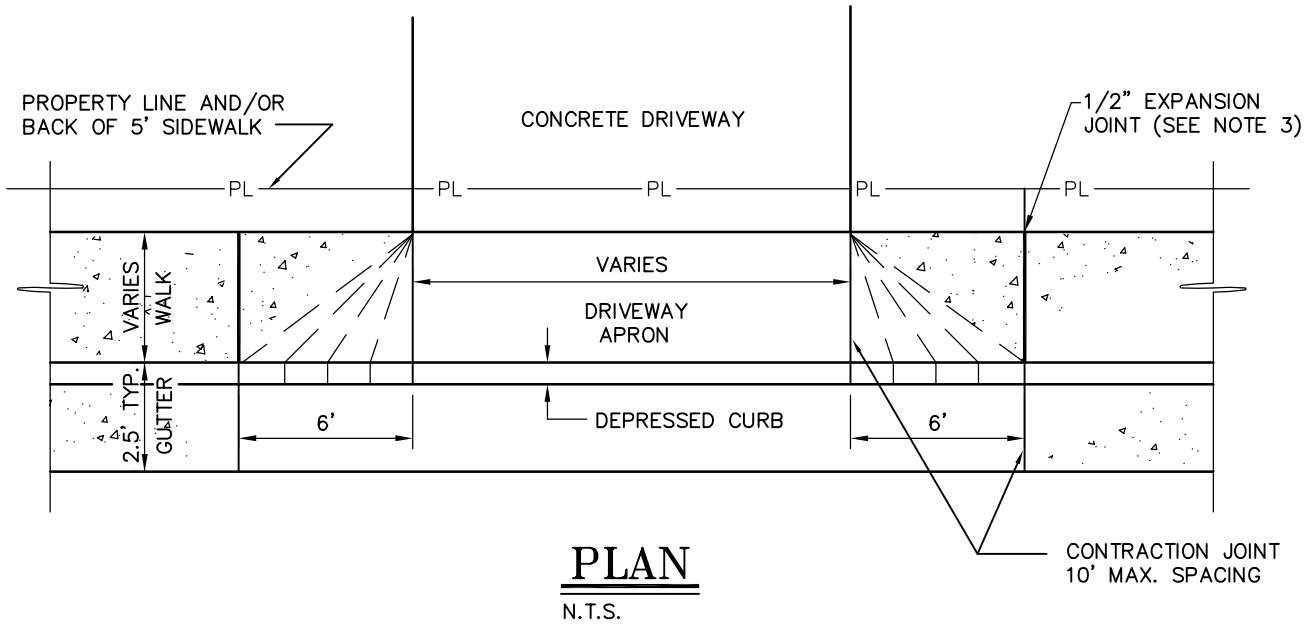
- 1. TRANSITION LIP OF CURB THROUGH APRON TO ACHIEVE 1" CROSS GUTTER DEPTH.
- 2. CROSS GUTTER FLOW LINE GRADE TO BE CONSTANT FROM CURB AND GUTTER ELEVATIONS AT EACH END.
- 3. ONLY 90° CORNERS WILL BE ALLOWED WHERE ASPHALT CONNECTS TO CROSS GUTTER. CONCRETE APRONS MAY BE REQUIRED.

PLAN
N.T.S.



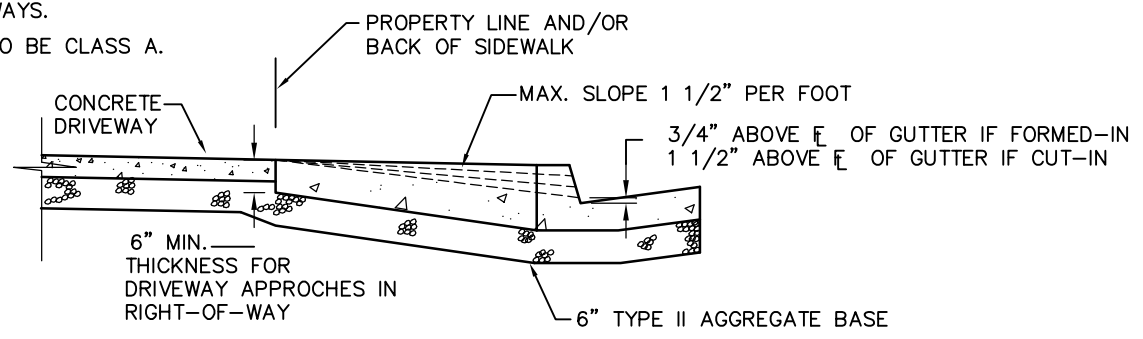
SECTION A-A
N.T.S.

SHEET NO. C2	6'-0" CROSS GUTTER	CEDAR CITY 10 NORTH MAIN STREET CEDAR CITY, UTAH 84720 PH. (435) 586-2983	SCALE: N.T.S.	DATE: 8/2019
FILE: C02			DRAWN: T.B.M.	CHECKED: K.C.W.

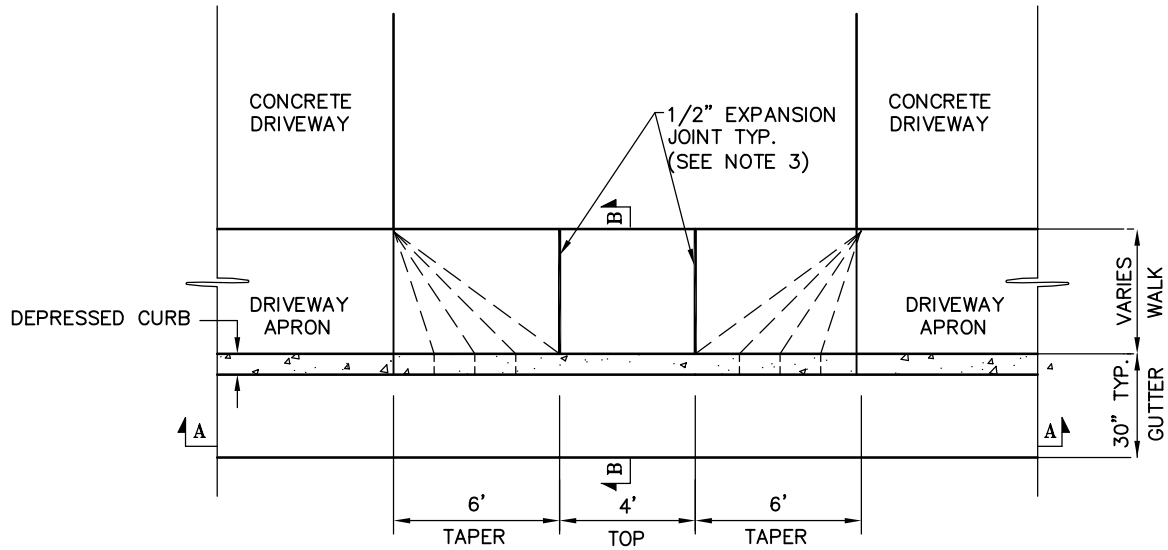


NOTES:

- 1- #4 BARS @ 16" O.C. BOTH WAYS REQ'D ON COMMERCIAL, RESIDENTIAL AND INDUSTRIAL DRIVEWAYS AND WHERE COMMERCIAL TRASH PICKUP IS ANTICIPATED.
- 2- DRIVEWAY CUTS IN EXISTING CURBS SHALL BE SAW CUT TO DIMENSIONS SHOWN, BREAKING-OFF OF CURB BACKS WILL NOT BE PERMITTED.
- 3- 40' EXPANSION JOINT SPACING IN SIDEWALKS TO CONTINUE THROUGH DRIVEWAYS.
- 4- ALL CONCRETE TO BE CLASS A.

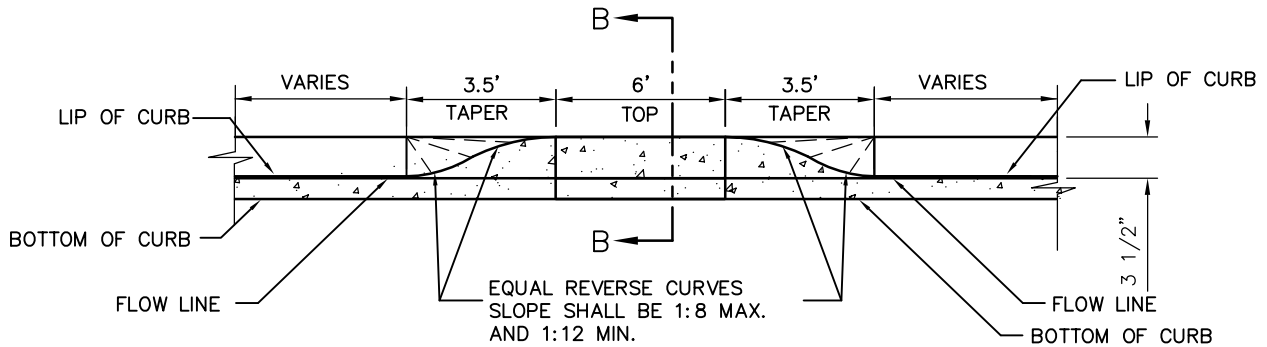


SHEET NO. C3	DRIVEWAYS	CEDAR CITY 10 NORTH MAIN STREET CEDAR CITY, UTAH 84720 PH. (435) 566-2963	SCALE: N.T.S.	DATE: 8/2019
FILE: C03			DRAWN: T.B.M.	CHECKED: K.C.W.



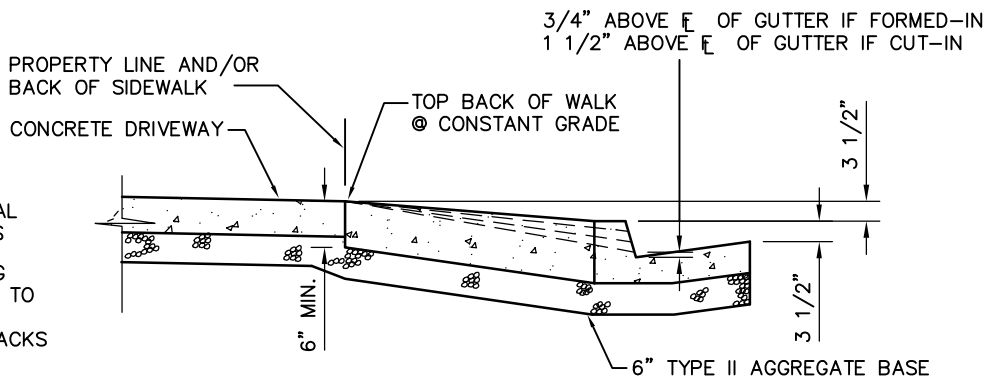
PLAN

N.T.S.



SECTION A-A

N.T.S.



SECTION B-B

N.T.S.

NOTES:

- 1- #4 BARS @ 16" O.C. BOTH WAYS REQ'D ON COMMERCIAL AND INDUSTRIAL DRIVEWAYS
- 2- DRIVEWAY CUTS IN EXISTING CURBS SHALL BE SAW CUT TO DIMENSIONS SHOWN, BREAKING-OFF OF CURB BACKS WILL NOT BE PERMITTED.
- 3- 40' EXPANSION JOINT SPACING IN SIDEWALKS TO CONTINUE THROUGH DRIVEWAYS.
- 4- ALL CONCRETE TO BE CLASS A.

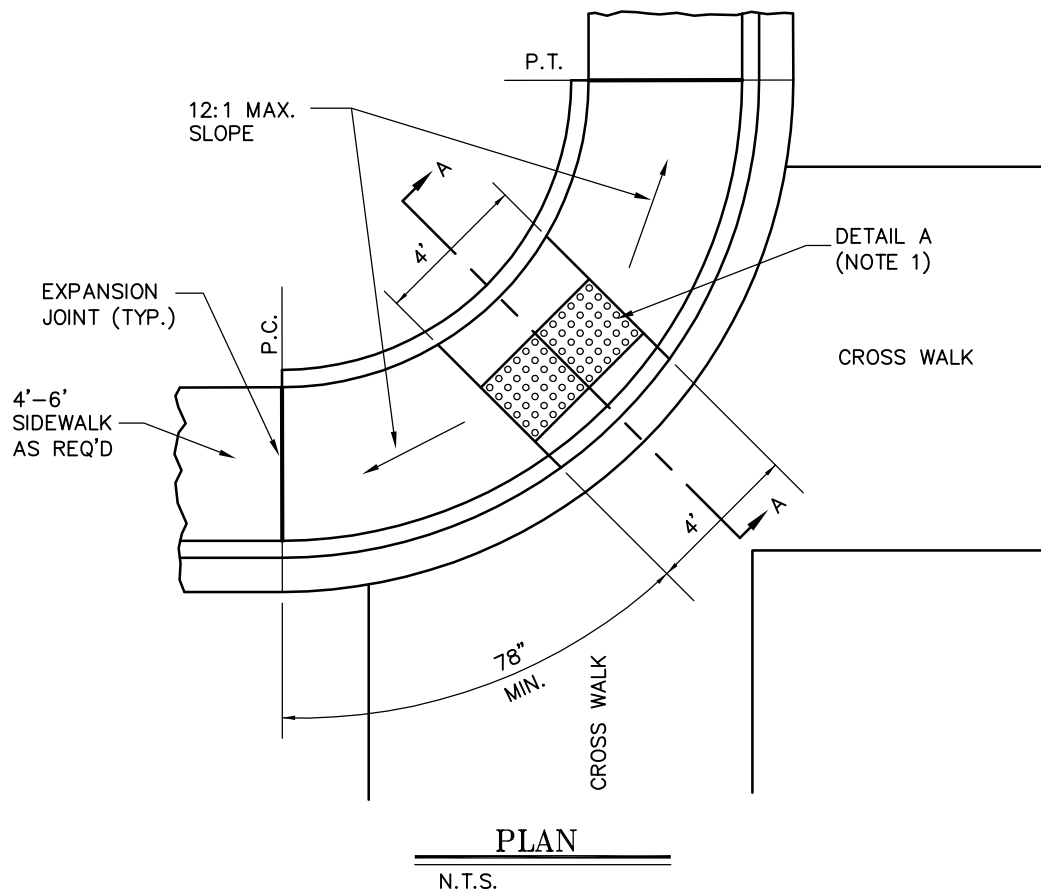
SHEET NO. C4
FILE: C04

COMMERCIAL/INDUSTRIAL/RESIDENTIAL
& PUD'S DRIVEWAY BREAKS



CEDAR CITY
10 NORTH MAIN STREET
CEDAR CITY, UTAH 84720
PH. (435) 586-2983

SCALE: N.T.S.	DATE: 8/2019
DRAWN: T.B.M.	CHECKED: K.C.W.

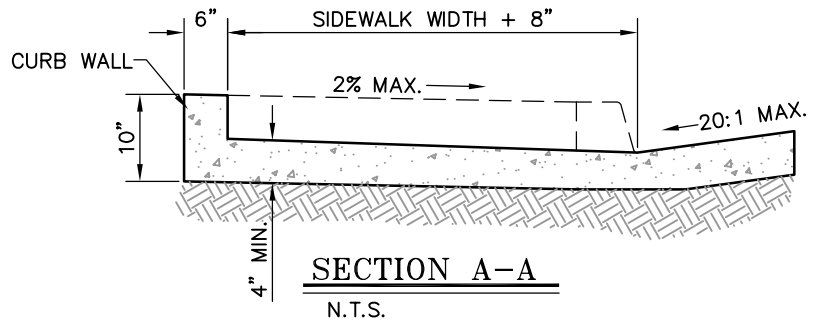


PLAN

N.T.S.

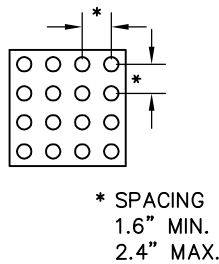
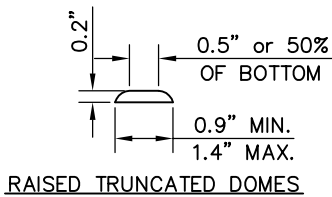
NOTES:

- 1- DETECTABLE WARNING CAST-IN-PLACE SYSTEM WITH TRUNCATED DOMES BY AMOR-TILE O.A.E. 24" x 48" SIZE, BRICK RED COLOR O.A.E.
- 2- WHEELCHAIR RAMPS SHALL BE LOCATED AT THE MIDPOINT OF CURB RADIUS UNLESS OTHERWISE INDICATED ON PLAN.
- 3- RAMPS SHALL BE CONSTRUCTED WITH A ROUGH BROOM FINISH TRANSVERSE TO THE SLOPE.
- 4- ALL CONCRETE TO BE CLASS A.
- 5- BACK OF WALK AND CURB WALL TO BE 1 INCH ABOVE TOP BACK OF CURB AT P.C. AND P.T.

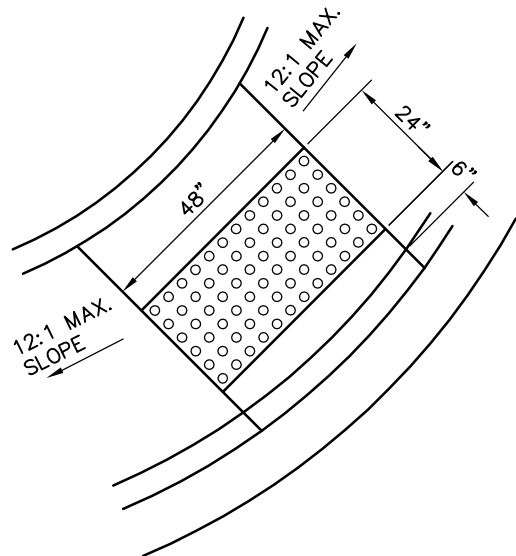


SECTION A-A

N.T.S.



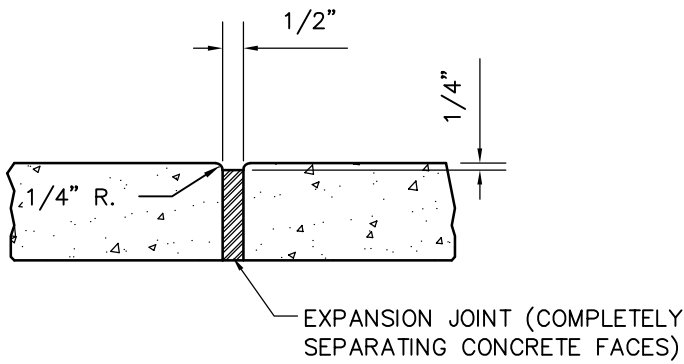
* SPACING
1.6" MIN.
2.4" MAX.



DETAIL A

N.T.S.

SHEET NO. C5	ACCESSIBLE RAMP		CEDAR CITY 10 NORTH MAIN STREET CEDAR CITY, UTAH 84720 PH. (435) 586-2963	SCALE: N.T.S.	DATE: 8/2019
FILE: C05				DRAWN: T.B.M.	CHECKED: K.C.W.

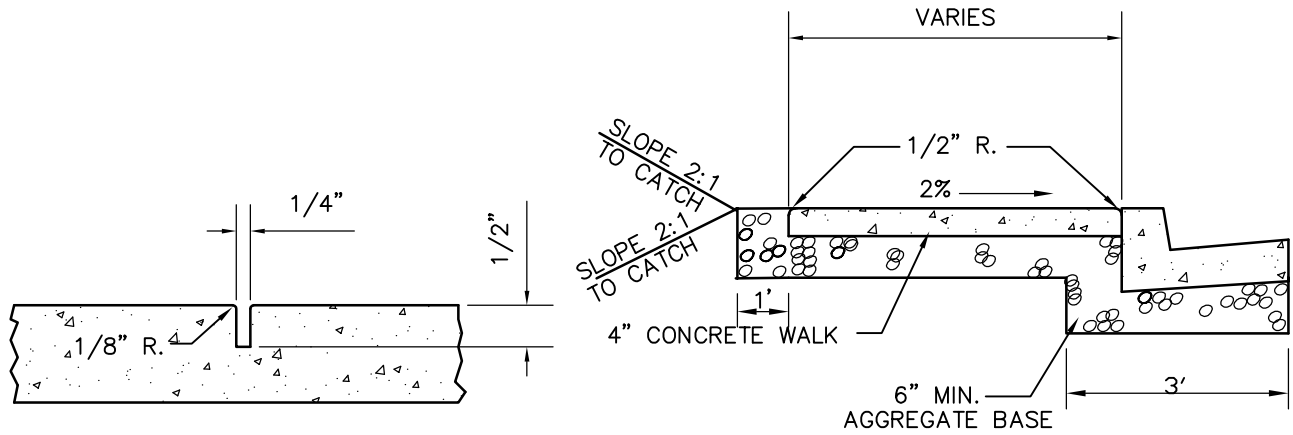


EXPANSION JOINT

N.T.S.

NOTE:

- 1- ON ALL CURB RETURNS EXPANSION JOINTS SHALL BE PLACED AT P.C. AND P.T. OF THE SIDEWALK.
- 2- ANY REPLACED SECTIONS OF SIDEWALK SHALL HAVE AN EXPANSION JOINT INSTALLED TO MAINTAIN THE 40' MAX. SPACING.

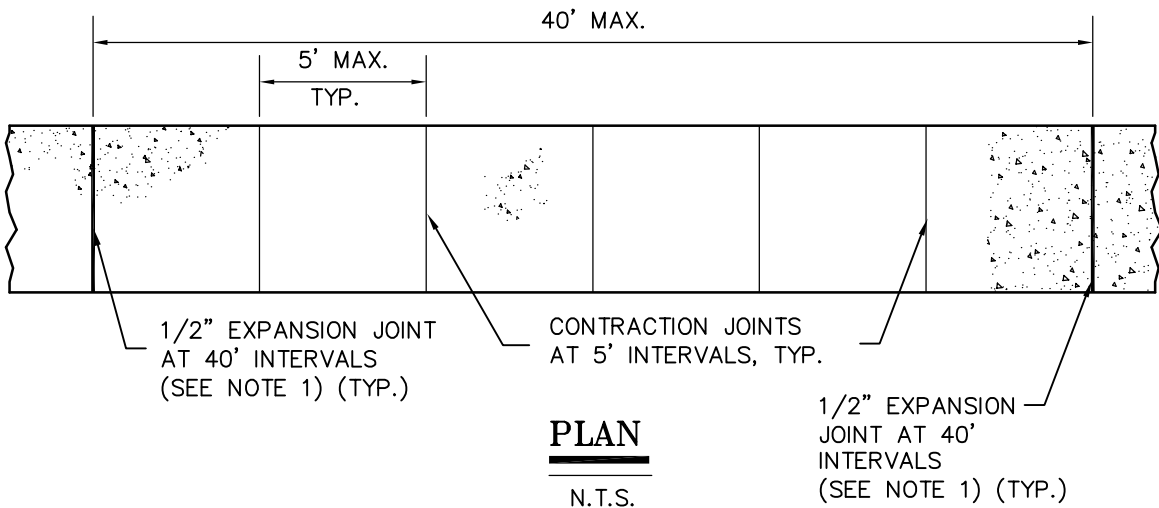


CONTRACTION JOINT

N.T.S.

TYPICAL SECTION

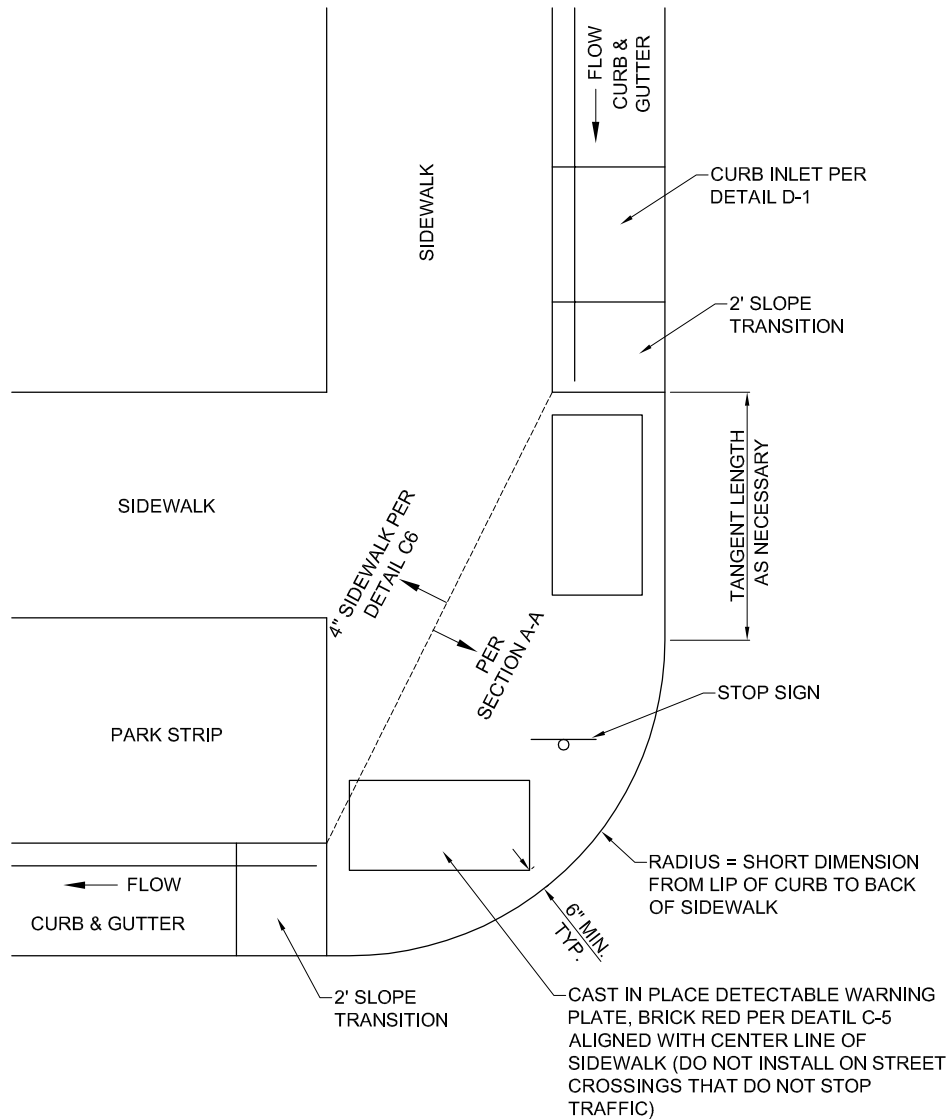
N.T.S.



PLAN

N.T.S.

1/2" EXPANSION JOINT AT 40' INTERVALS (SEE NOTE 1) (TYP.)

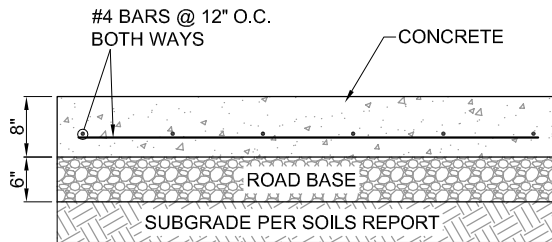


PLAN VIEW

N.T.S.

NOTES:

1. FALSE RADIUS ONLY ALLOWED WHERE APPROVED BY CITY ENGINEER.
2. CURB & GUTTER TO FLOW AWAY FROM FALSE RADIUS UNLESS STORM WATER FLOW IS ROUTED INTO A STORM DRAIN VIA A CURB INLET BOX AS SHOWN.
3. FALSE RADIUS TO BE ADAPTED TO CONDITION IN FIELD AS APPROVED BY CITY ENGINEER.



SECTION A-A

N.T.S.

SHEET NO.

C7

FILE: C07

FALSE RADUIS DETAIL

CEDAR CITY
 10 NORTH MAIN STREET
 CEDAR CITY, UTAH 84720
 PH. (435) 586-2963

SCALE: N.T.S.

DATE: 8/2019

DRAWN: T.B.M.

CHECKED: K.C.W.