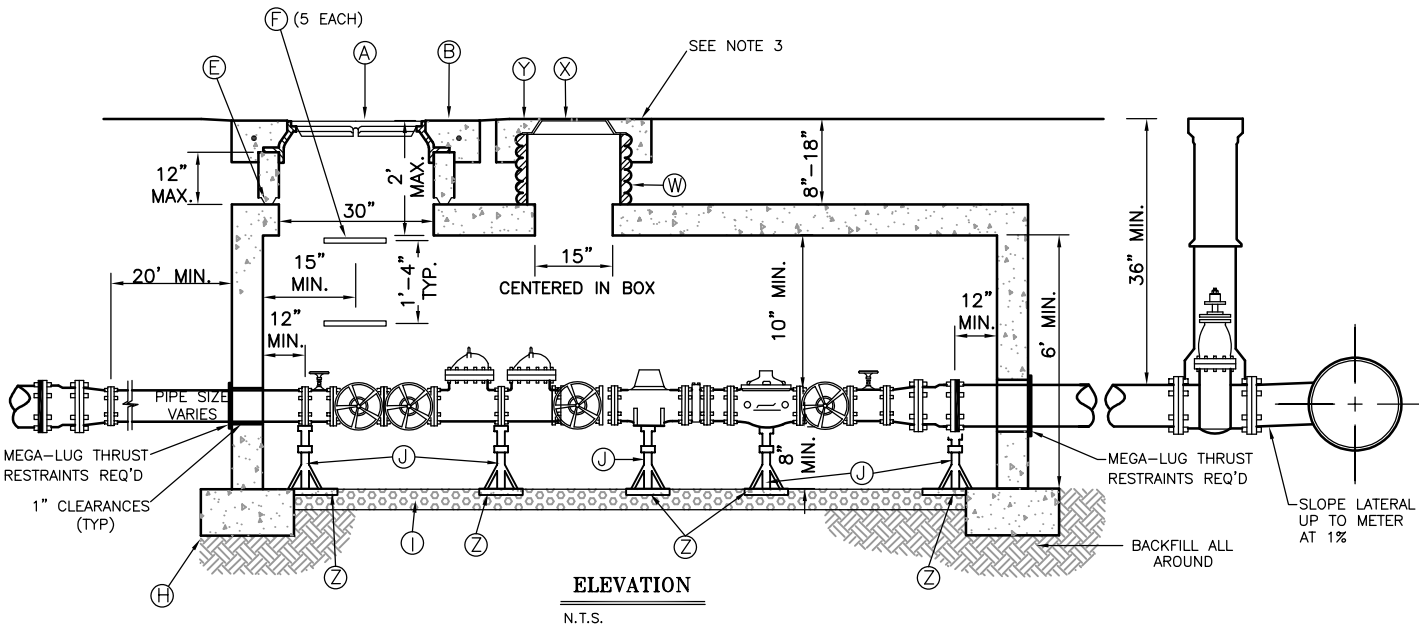


PLAN
N.T.S.



ELEVATION
N.T.S.

NOTES:

1. UNLESS OTHERWISE SHOWN ALL MATERIALS PER CEDAR CITY ENGINEERING STANDARDS.
2. CONCRETE VAULT LENGTH & WIDTH SHALL BE SUFFICIENT TO CONTAIN ALL FITTINGS AND MAINTAIN INDICATED CLEARANCE FROM WALLS.
3. WATER METER LIDS & COVERS SHALL ONLY BE INSTALLED IN LANDSCAPED AREAS UNLESS APPROVED BY WATER SUPERINTENDENT.
4. REQUIRED ON PRIVATE WATER SYSTEMS WITH FIRE HYDRANTS.
5. VAULTS ARE DESIGNED TO MEET ASTM C858 WITH AASHTO HS-20 LOADING.
6. PRV IS REQUIRED FOR 80 PSI PRESSURE OR GREATER.
7. STRAINER IS REQUIRED IF PRV IS REQUIRED.
8. ALL PIPE MATERIALS AND FITTINGS MUST BE RATED FOR WATER SYSTEM PRESSURE.
9. ONLY NEPA 13R FIRE SPRINKLER SYSTEMS ARE ALLOWED WITH THIS DETAIL.
10. FIRE SPRINKLER SYSTEMS SHOULD BE DESIGNED ACCORDING TO REDUCED PRESSURE WHEN USING A PRV INSIDE THE VAULT.

LEGEND

NO.	ITEM	DESCRIPTION	NO.	ITEM	DESCRIPTION
(A)	MANHOLE RING AND COVER (RIBLESS)	D&L A-1180 O.A.E.	(P)	6" DOUBLE CHECK DETECTOR VALVE (DCDA)	AWWA APPROVED
(B)	4' x 8" THICK CONCRETE COLLAR	W/ 40' x #4 BARS & FIBERS	(Q)	FLOW METER (PURCHASED FROM CITY)	
(C)	PIPE MATERIAL PER PLUMBING CODE		(R)	6" PRESSURE REDUCING VALVE (IF REQ'D)	AWWA APPROVED
(D)	NOT USED		(S)	6" MIN. D.I. PIPE	CEMENT LINED
(E)	GRADE RING(S)	MUST BE SEALED	(T)	CITY WATER MAIN	
(F)	MANHOLE STEP	(M.A. INDUSTRIES INC. O.A.E.)	(U)	GATE VALVE WITH BOX	SEE W1
(G)	CONCRETE VAULT TOP	AMCOR UV6127T O.A.E.	(V)	6" FLANGED SPOOL 12" LONG	CEMENT LINED
(H)	9" x 18" FOOTING W/ 3-#4 BARS		(W)	18" DIA. HDPE PIPE	PER PIPE SPEC.
(I)	4" THICK DRAIN GRAVEL		(X)	RING & LID w/ 2" PUNCHOUT	D&L-2241 O.A.E.
(J)	(2) LEVELING JACKS (LENGTH VARIES)	SLIDEWINDER PART #23535 BY BARKER MANUF. CO.	(Y)	30"x30"x8" THICK CONCRETE COLLAR	
(K)	6" MIN. FLANGE ADAPTOR	CEMENT LINED	(Z)	12" x 12" x 2" CONCRETE BLOCK	
(L)	x" x 6" FLANGED REDUCER (IF REQ'D)	CEMENT LINED	(AA)	BACKFLOW ASSEMBLY VALVE	
(M)	6" FLANGED STEEL SPOOL WITH 2" OUTLET	EPOXY COATED AND LINED	(BB)	STRAINER (IF REQUIRED)	PURCHASED FROM CITY
(N)	2" GATE VALVE WITH 4" NIPPLE				
(O)	6" GATE VALVE WITH HANDWHEEL	NON-RISING STEM			

SHEET NO.
W7
FILE: W07

WATER METER WITH FIRE FLOW
(COMBINED CULINARY & PRIVATE FIRE HYDRANT FLOWS)

REVISIONS		
DATE	DESCRIPTION	BY
7/2021	ADDED AA & BB, ADDED A VALVE	J.A.S.

CEDAR CITY
10 NORTH MAIN STREET
CEDAR CITY, UTAH 84720
PH. (435) 586-2863

SCALE: N.T.S.
DATE: 7/2021
DRAWN: T.B.M.
CHECKED: J.A.S.