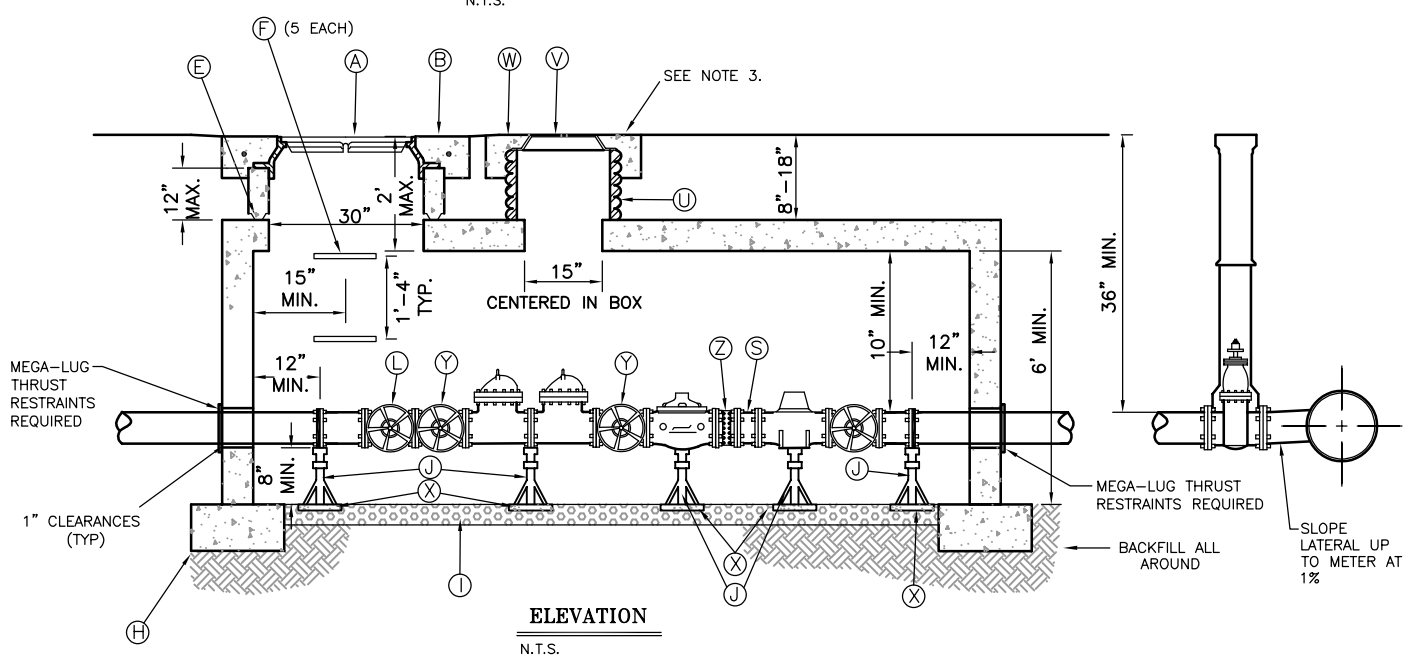


**PLAN**  
N.T.S.



**ELEVATION**  
N.T.S.

**NOTES:**

1. UNLESS OTHERWISE SHOWN ALL MATERIALS PER CEDAR CITY ENGINEERING STANDARDS.
2. CONCRETE VAULT LENGTH & WIDTH SHALL BE SUFFICIENT TO CONTAIN ALL FITTINGS AND MAINTAIN INDICATED CLEARANCE FROM WALLS.
3. WATER METER LIDS & COVERS SHALL ONLY BE INSTALLED IN LANDSCAPED AREAS UNLESS APPROVED BY WATER SUPERINTENDENT.
4. NOT ALLOWED ON PRIVATE SYSTEMS WITH FIRE HYDRANTS.
5. VAULTS ARE DESIGNED TO MEET ASTM C858 WITH AASHTO HS-20 LOADING.
6. PRV IS REQUIRED FOR 80 PSI PRESSURE OR GREATER.
7. STRAINER IS REQUIRED IF A PRV IS REQUIRED.
8. ALL PIPE MATERIALS AND FITTINGS MUST BE RATED FOR WATER SYSTEM PRESSURE.
9. ONLY NFPA 13R FIRE SPRINKLER SYSTEMS ARE ALLOWED WITH THIS DETAIL.
10. FIRE SPRINKLER SYSTEMS SHOULD BE DESIGNED ACCORDING TO REDUCED PRESSURE WHEN USING A PRV IN THE VAULT.

**LEGEND**

NO.	ITEM	DESCRIPTION	NO.	ITEM	DESCRIPTION
(A)	MANHOLE RING AND COVER (RIBLESS)	D&L A-1180 O.A.E.	(P)	DUCTILE IRON PIPE OR COPPER PIPE	CEMENT LINED OR COPPER
(B)	4' x 8" THICK CONCRETE COLLAR	W/ 40" Ø #4 BARS & FIBERS	(Q)	GATE VALVE WITH BOX	SEE W1
(C)	NOT USED		(R)	FIRE LOOP OR CITY WATER MAIN	
(D)	NOT USED		(S)	FLANGED SPOOL 12" LONG	
(E)	GRADE RING(S)	MUST BE SEALED	(T)	1 1/2" PIPE TAP WITH GATE VALVE AND 4" NIPPLE	
(F)	MANHOLE STEP	(M.A. INDUSTRIES INC. O.A.E.)	(U)	18" DIA. HDPE PIPE	PER PIPE SPEC
(G)	CONCRETE VAULT TOP	AMCOR UV6127T O.A.E.	(V)	RING & LID w/ 2" PUNCHOUT	D&L-2241 O.A.E.
(H)	9" x 18" FOOTING W/ 3-#4 BARS		(W)	30"x30"x8" THICK CONCRETE COLLAR	
(I)	4" THICK DRAIN GRAVEL		(X)	12" x 12" x 2" CONCRETE BLOCK	
(J)	(5) LEVELING JACKS (LENGTH VARIES)	SLIDEWINDER PART #23535 BY BARKER MANUF. CO.	(Y)	BACKFLOW ASSEMBLY VALVE	
(K)	6" MIN. FLANGE ADAPTOR	CEMENT LINED	(Z)	STRAINER (IF REQUIRED)	PURCHASED FROM CITY
(L)	GATE VALVE WITH HANDWHEEL	NON-RISING STEM	(AA)	DUCTILE IRON PIPE OR COPPER PIPE (TO 10' OUTSIDE OF VAULT)	
(M)	FLOW METER (PURCHASED FROM CITY)	MACH 10			
(N)	PRESSURE REDUCING VALVE (IF REQ'D)	AWWA APPROVED			
(O)	DOUBLE CHECK DETECTOR VALVE (DCDA)	AWWA APPROVED			

SHEET NO. **W6**  
FILE: **W06**

**1 1/2"-4" WATER METER**  
**(COMBINED CULINARY & FIRE SPRINKLER FLOWS)**

REVISIONS		
DATE	DESCRIPTION	BY
7/2021	CHANGED ITEM J, M & O ADDED NOTES Y, Z & AA	J.A.S.

**CEDAR CITY**  
10 NORTH MAIN STREET  
CEDAR CITY, UTAH 84720  
PH. (435) 586-2963

SCALE: **N.T.S.** DATE: **7/2021**  
DRAWN: **T.B.M.** CHECKED: **J.A.S.**