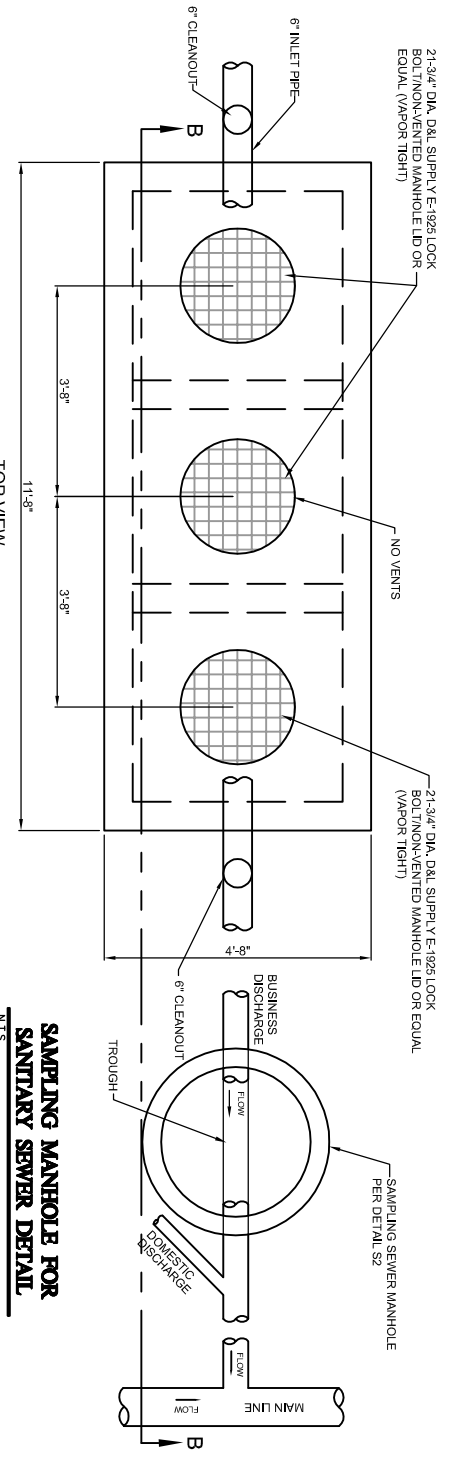
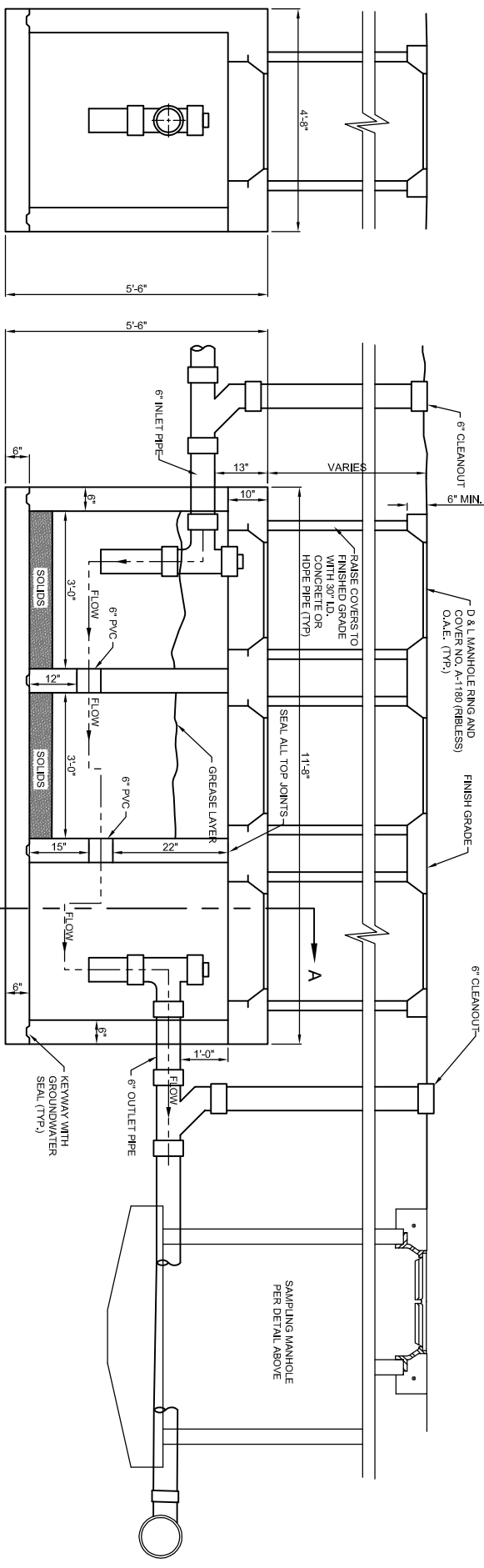


- SAMPLING MANHOLE NOTES:**
- MANHOLES IN ROADWAYS OR PARKING LOTS REQUIRE CONC. COLLAR, MANHOLES IN UNIMPROVED AREAS SHALL BE SET 6 INCHES ABOVE FINISH GRADE, (NO CONC. COLLAR REQUIRED)
 - MANHOLE LID, RING AND CONCRETE COLLAR TO BE SET 1/4 INCH BELOW TOP OF ASPHALT.

- INTERCEPTOR NOTES:**
- MATERIAL SPECS:
 - CONCRETE PORTLAND CEMENT TYPE II, MINIMUM COMPRESSIVE STRENGTH=4000 PSI ASTM A815
 - REINFORCING BAR INTERMEDIATE GRADE #40 A815
 - REINFORCING WELDED WIRE MESH ASTM A185
 - UNIT COATED OUTSIDE WITH AN APPROVED PROTECTIVE COATING.
 - ALL DIMENSIONS ARE NOT TO BE USED FOR CONSTRUCTION PURPOSES UNLESS CERTIFIED.
 - PRECAST UNIT TO BE PLACED ON NATURAL SOIL, STANDARD GROUND WATER SEALS-BUTYL ROPE MASTIC OR CEMENT MORTAR.
 - INTERCEPTOR MANHOLE COVERS TO BE SET FLUSH WITH ASPHALT OR CONCRETE PARKING LOT GRADES OR 6" MIN. ABOVE GRADE IN UNFINISHED OR LANDSCAPE AREAS.



SAMPLING MANHOLE FOR SANITARY SEWER DETAIL
N.T.S.



SECTION B-B VIEW

SECTION A-A VIEW

CONTACT CEDAR CITY WASTEWATER DEPARTMENT FOR FURTHER INFORMATION

GREASE, OIL, & SAND INTERCEPTOR DETAIL
N.T.S.