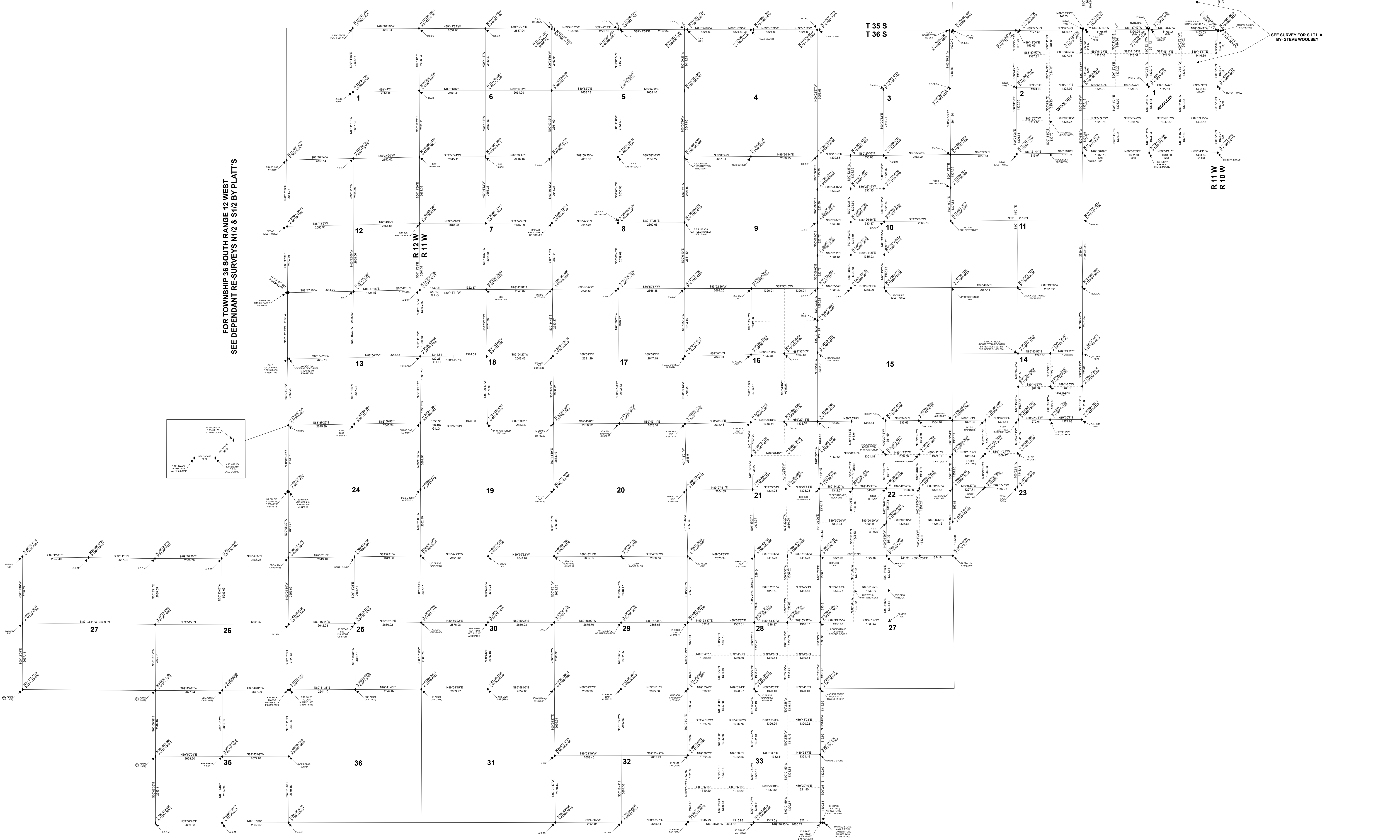
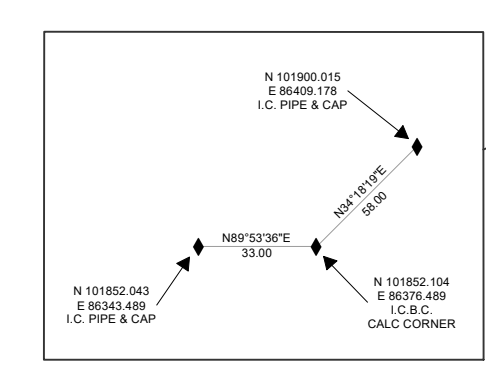


FOR TOWNSHIP 35 SOUTH RANGE 11 WEST
SEE DEPENDANT RE-SURVEY BY DOUG GRIMSHAW

FOR TOWNSHIP 36 SOUTH RANGE 12 WEST
SEE DEPENDANT RE-SURVEYS N1/2 & S1/2 BY PLATTS



Disclaimer:

This Data was compiled from surveys by Cedar City Corp, Platts & Platts Engineering, Woolsey Surveying, Bulloch Brothers Engineering, Grimshaw Surveying and Adams Surveying. For Reference purposes only. The user accepts all responsibility for the use of this map and data. The monument data represented may be used in surveying activities, but should be double-checked for accuracy. Cedar City Corporation assumes no liability for the accuracy of this map. Intent is for viewing purposes only.